

Reviewer's Guide to

Able2Extract Professional

19

Created: December 2023

Table of Contents

ABLE2EXTRACT PROFESSIONAL 19	4
New Features in Able2Extract Pro 19	5
How to Install Able2Extract Pro 19	7
System Requirements	8
Able2Extract Pro 19 Functionalities	9
User Interface	9
Powerful PDF Conversion Features	10
Multiple PDF Conversion Options	10
Smooth and Accurate PDF Conversion	12
Convert Almost Any Format to Excel	12
PDF to Excel Conversion Settings	13
Easy PDF Creation	15
Creating Secure PDFs	16
Complete Set of PDF Editing Features	17
Document Properties	17
Page Editing	18
Text Editing	18
Adding Bitmap Images and Vector Graphics (Shapes)	19
Redaction	20
Insert Bates Numbering	20
Total Annotation Options Pack	21
Sign and Secure PDFs Like a Pro	22

All-in-one PDF Forms Tool	24
Filling PDF Forms	24
Editing and Creating PDF Forms	24
Exporting PDF Forms Data to CSV	25
Document Comparison Tool	26
Advanced PDF Features	27
Custom PDF to Excel Conversion	27
OCR Technology	28
Batch Conversion	30
Batch Creation	32
Premium Support	33
ABOUT INVESTINTECH.COM	34
Contact Us	34

ABLE2EXTRACT PROFESSIONAL 19

Converting, creating, editing, and signing PDFs has never been easier!

There is no alternative to **a complete desktop PDF software solution** when it comes to working with PDF files. It is a must-have tool in every business environment, because it simplifies and speeds up the process of manipulating data locked down in the most popular digital file format for sharing and archiving documents.

Able2Extract Professional 19 has all it takes to accomplish every possible PDF task smoothly, and the latest version offers upgrades and improvements that make this product **an ultimate PDF solution for business and home users.**



New Features in Able2Extract Pro 19

- **Brand new Batch OCR Converter**

Get efficiency and precision with the new batch OCR converter. Convert multiple scanned PDFs documents into editable file formats with just a few clicks. Whether you're dealing with invoices, contracts, or presentations, our Batch OCR Converter is your go-to solution for fast, accurate, and streamlined scanned document conversions and text extractions.

- **New Windows Extension for PDF Conversions**

Our Windows Extension is aimed at simplifying and speeding up your PDF conversion. This extension seamlessly integrates with your Windows environment, providing a quick and efficient solution for converting PDFs right from your desktop! With more than 10 output options, Able2Extract Professional 19 can instantly transform PDF files into various formats, enhance your PDF workflow, and provide accurate conversion results with just a few clicks.

- **Improved and Upgraded OCR Technology**

We've also made OCR improvements one of our main focuses for this latest version. The image-to-text recognition process now incorporates more advanced and robust OCR engines to accurately analyze and interpret mixed alpha numeric characters, allowing you to seamlessly convert an even broader range of scanned text with accuracy and efficiency.

- **Overall Conversion Improvements**

From enhanced accuracy in text recognition to quicker processing times, our improved conversion technology redefines the standard for document conversion. We've tweaked the conversion engine to process PDFs faster and more reliably than ever before. Convert text, images, or entire documents with a superior level of quality and speed every time.

- **Compatibility updates and Bug fixes**

Our latest version includes bug fixes and enhanced system compatibility for the features you use on a regular basis. These new technology tweaks mean superior performance, heightened security, and more

efficient conversion output. With Able2Extract Professional 19, you get a seamless and more reliable PDF user experience. Enjoy precision, security, and performance for all your conversion needs!

- **Advanced Security Improvements**

Security is paramount in Able2Extract Professional 19's latest update. This version prioritizes safeguarding your system by addressing over 15 recent security vulnerabilities associated with Zlib and OpenSSL. Regardless of your operating system—be it Windows, macOS, or Linux—Able2Extract Professional ensures that you can confidently work on your PDFs without any concerns about compromising your system or sensitive data. Your peace of mind is our top priority.

How to Install Able2Extract Pro 19

Able2Extract Professional 19 can be downloaded on this page:

https://www.investintech.com/prod_downloads2e.htm

Users will be presented with the download for their operating system. Alternatively, they can click the “Available for” icon to download installation(s) for Windows, Mac, or Linux (Fedora and Ubuntu) manually.

The free trial version can be used for seven days and it allows users to use all Able2Extract Professional 19 features, with the only limitation of being able to convert up to three pages of a document.

In order to continue using Able2Extract Professional 19 after the trial period has expired (or remove the trial’s three-page conversion limitation) users can purchase a full, lifetime license or a 30-day license here: https://www.investintech.com/order_a2e.htm

For any help with installing and using the software, please get in touch with our support team using the contact information at the [end of this document](#).

System Requirements

General Requirements

- Administrative privileges for software installation
- Internet connection may be required to download additional resources

Detailed Hardware Requirements

- Processor:
 - The processor has to be x86 architecture. Both 32-bit or 64-bit are supported.
- Memory:
 - 512+ MB of free memory available for the software
- Disk space:
 - Windows: 350 MB
 - Mac: 350 MB
 - Linux: 350 MB (Ubuntu), 350 MB (Fedora)
- Monitor:
 - Windows and Linux: 1366 (Width) x 768 (Height) screen resolution (higher resolution screen required if OS scaling is more than 100%)
 - Mac: 1366 (Width) x 768 (Height) or 1280 (Width) x 800 (Height) non-Retina screen resolution, 2560 (Width) x 1600 (Height) Retina screen resolution
 - 16bit (HighColor) or 24/32bit (TrueColor) color

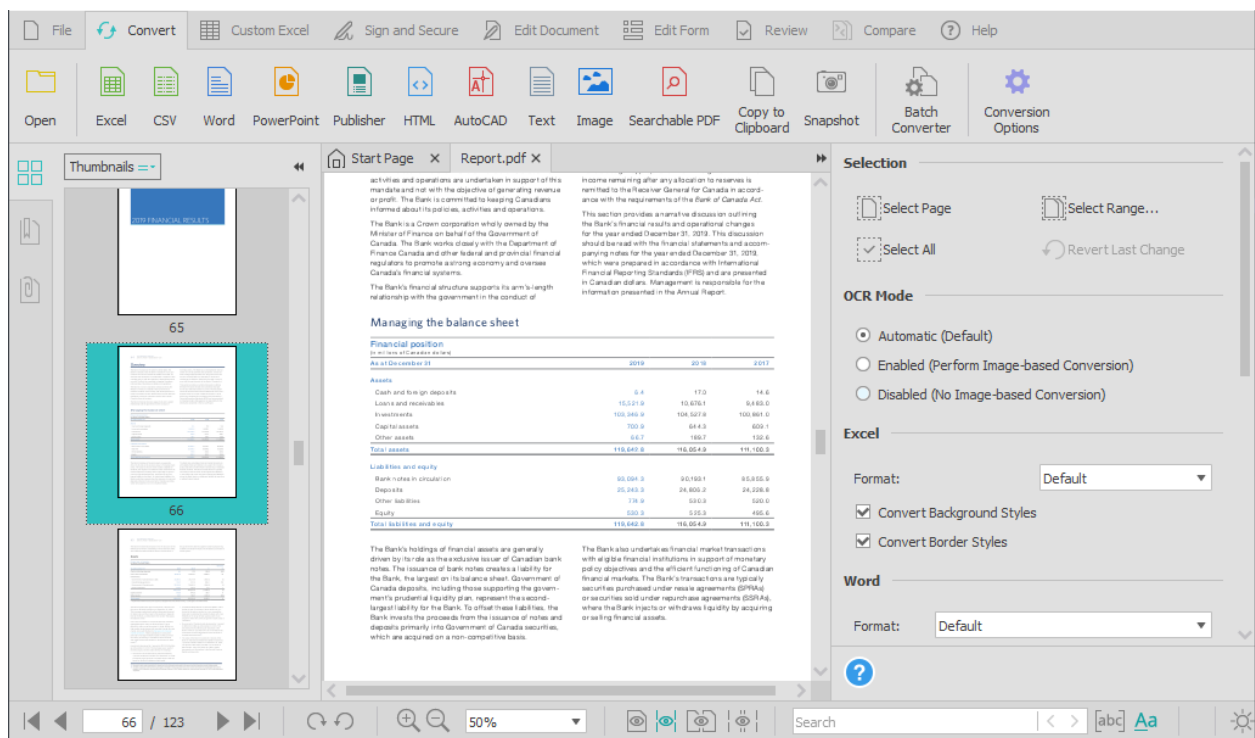
Compatible Operating Systems

- Windows 11, 10, 8.1, 8, Windows Server 2022, 2019, 2016, 2012 R2, 2012, 2008 R2, 32-bit or 64-bit
- macOS 14 (Sonoma), 13 (Ventura), 12 (Monterey), 11 (Big Sur)
- Ubuntu 23.10, 23.04, 22.04, 20.04
- Fedora 39, 38, 37, 36, 35, 64-bit edition

Able2Extract Pro 19 Functionalities

User Interface

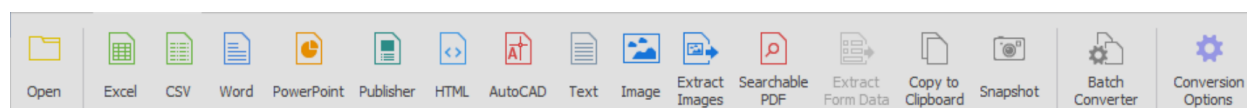
Able2Extract Professional's graphic user interface is unique in its simplicity without sacrificing functionality. A modern and straightforward design allows both professional and amateur users to easily navigate its Tabs, Main toolbar, and Side panel options. Users can choose between six UI languages (English, Spanish, German, French, Italian and Portuguese), Light and Dark theme, as well as decide if they would like to start every session with the help of the Start page or not.



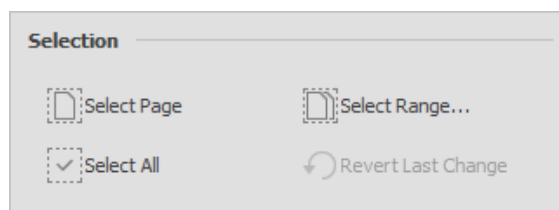
PDF tasks can be performed via the Main toolbar options (nested under eight distinct Tabs) by clicking on the appropriate icons. Multiple PDF documents can be opened in Able2Extract with each document opening in a separate tab, so users can switch between tabs and work on their files simultaneously.

Powerful PDF Conversion Features

The starting point of any PDF conversion in Able2Extract Professional 19 is the **Convert tab**. It offers users the range of choices for converting their digital documents. In order to open the document that needs conversion, click on the **Open** icon. Exploring the Convert tab, users will find the following options:



The whole document is selected for conversion by default. In order to convert just the part of a PDF or specific pages (page ranges), users can drag-select the content or use Selection options located in the Side panel.



Multiple PDF Conversion Options

Able2Extract Professional users can convert their PDF files into several different file formats: **MS Excel, Word, PowerPoint, Publisher, OpenOffice (Calc, Write, and Impress), HTML, AutoCAD (DWG and DXF), CSV, Image formats (JPG, GIF, PNG, BMP, TIFF, WebP), and plain text.**

The conversion process is quick and straightforward. After opening the file for conversion, users can choose their preferred output format from the Convert tab's Main toolbar right away to convert the whole document.

Alternatively, they can **drag-select** the content for conversion, **use selection options**, and apply **advanced settings** from the Side panel before choosing the output file format.

Selection

Select Page

Select Range...

Select All

Revert Last Change

OCR Mode

Automatic (Default)

Enabled (Perform Image-based Conversion)

Disabled (No Image-based Conversion)

Excel

Format: Default

Word

Format: Default

Formatting: Standard (Recommended)

PowerPoint

Format: PowerPoint 2007 (PPTX)

Publisher

Formatting: Standard (Recommended)

AutoCAD

Format: Drawing Exchange Format (DXF)

Image

Format: Portable Network Graphics (PNG)

Clipboard Formats

☒ Text

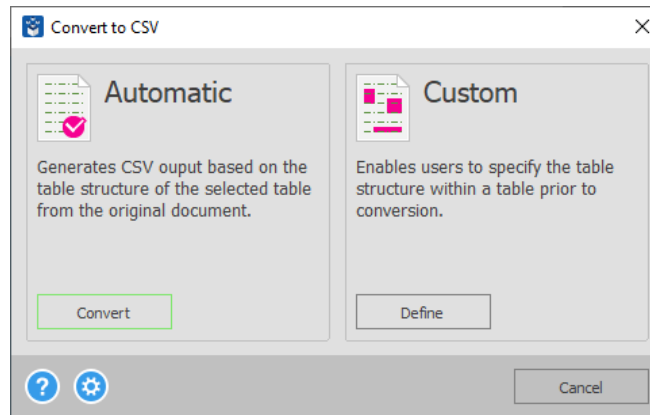
☒ Rich Text Format (RTF)

☒ Delimiter Separated Values (CSV)

☒ Open File After Conversion

?

Some conversions are automatic, such as PDF to Word and PDF to PowerPoint. Conversions such as PDF to Excel or PDF to CSV offer users a chance to customize their files prior to conversion.



Smooth and Accurate PDF Conversion

Able2Extract Professional's major strength is the accuracy of its conversion output, especially for complex conversions such as PDF to Excel and scanned (image) document conversion. These types of conversions have been difficult to perform with complete accuracy in the past. Based on MS Excel user complaints of PDF conversion software in general, Investintech.com has been improving Able2Extract Professional's Custom PDF to Excel feature in every version of the software. The latest version 19 includes several PDF to Excel conversion enhancements, such as improvements with PDF table conversions, preserving cell wrapping formatting and performance optimizations when working with large PDFs. In addition, users can now double click to delete lines or tables in the Custom Excel tab.

Able2Extract Professional 19 now offers even smoother and more accurate conversions, making this the most attractive feature for its users.

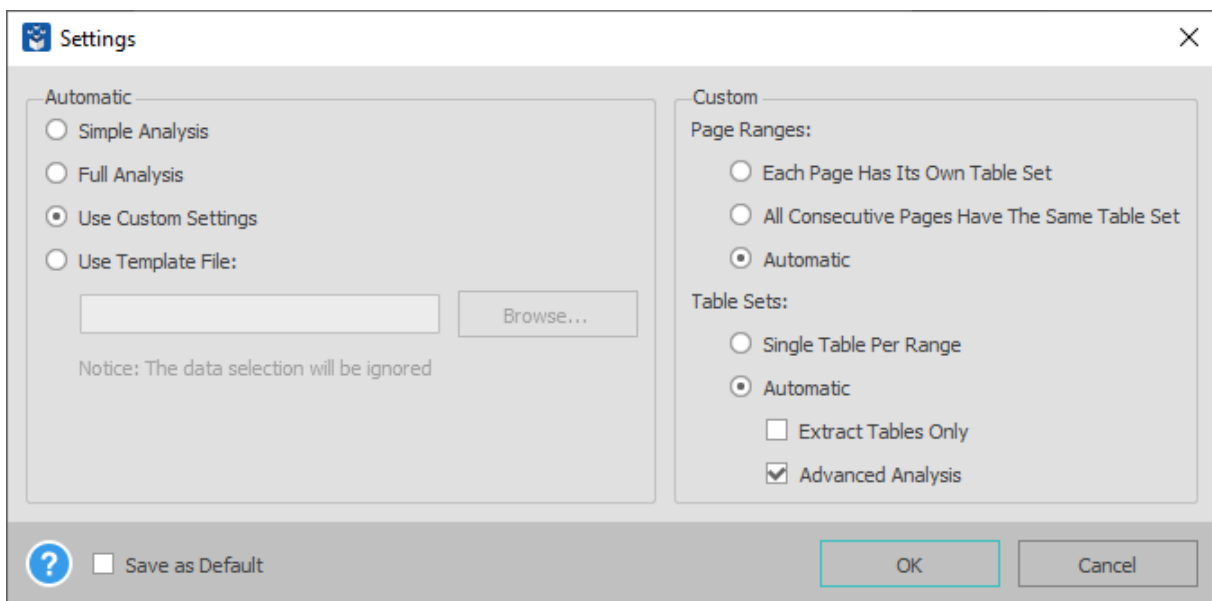
Convert Almost Any Format to Excel

As part of its offerings as a data extraction tool, Able2Extract Professional 19 can perform **non-PDF conversions directly into Excel spreadsheets**. Users can easily transfer text and content from Word, PowerPoint, and more, into spreadsheets they can then instantly analyze.

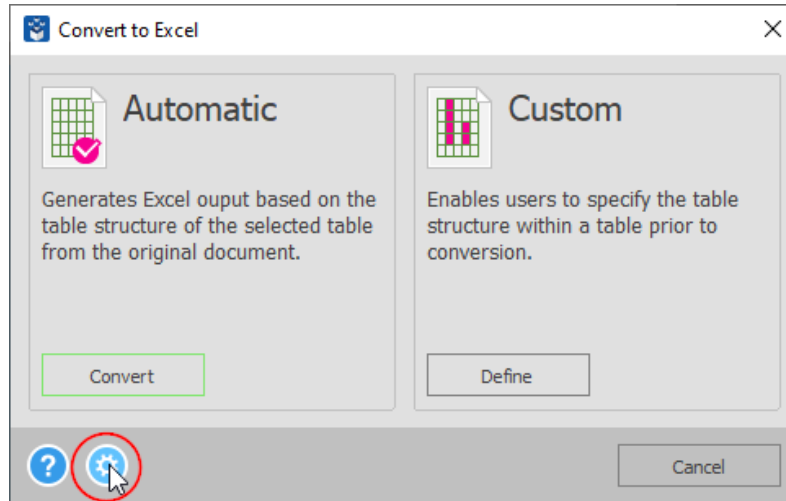
The conversion process is the same: users open their file (select the content to convert or proceed to convert the whole document) and simply select the PDF to Excel conversion command.

PDF to Excel Conversion Settings

Able2Extract Professional 19 comes with the **ability to refine conversion output results to Excel**. The Advanced Analysis option improves upon Able2Extract's ability to recognize PDF tables and transfer them into Excel. Users can select from different conversion settings that will further tweak the conversion process.



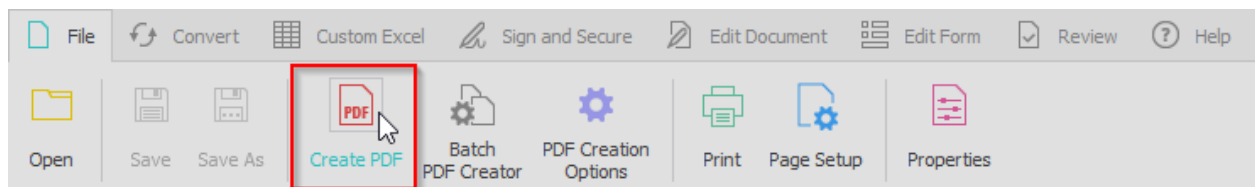
These settings can be accessed by clicking on the **gear icon in the Convert to Excel dialog** once you select Excel as your conversion output:



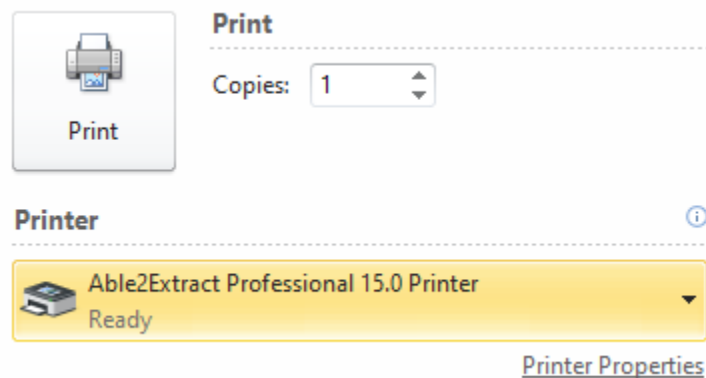
Easy PDF Creation

Able2Extract Professional 19 includes **advanced PDF creation features**. There are two ways to create PDFs: via the File tab's Main toolbar **Create PDF option** (within the software) or via Able2Extract Professional's **virtual printer** from any application's print options (without opening the software).

Users who wish to create PDFs within Able2Extract can go to the File tab and click on the Create PDF icon on the Main toolbar.



Users who wish to print PDFs without opening Able2Extract Professional can open the document they wish to convert to PDF, click on File, choose Print and then select Able2Extract Professional Printer from the available print drivers.

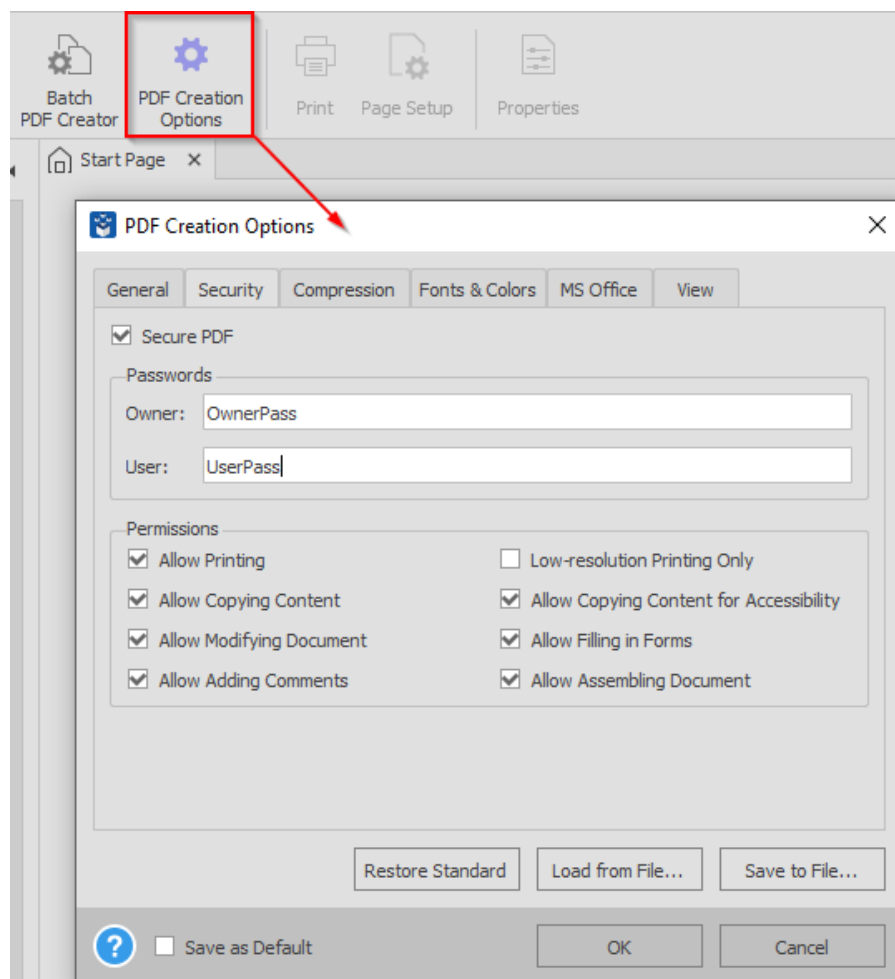


Creating Secure PDFs

Able2Extract Professional 19's Create PDF function allows users to secure their file by **password-protecting** it and setting up various file permissions.

Users can choose to **set up permissions** for printing, copying, modifying, adding comments, allowing only low-quality printing, etc. That way they can limit the recipients' options when dealing with their document.

To access these settings, users need to click the **PDF Creation Options** icon under the File tab.



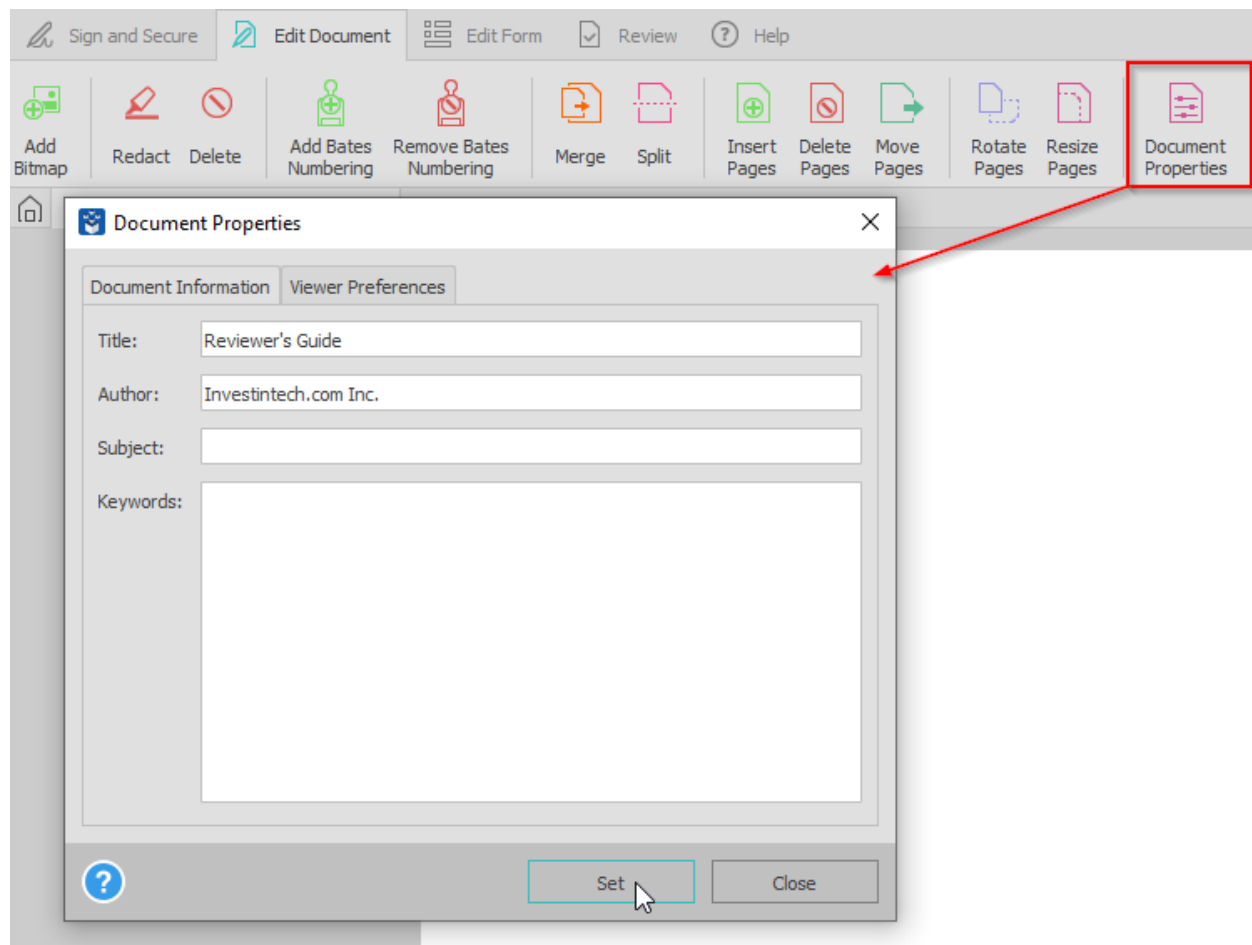
This is an especially useful feature for creating professional documents that contain sensitive information.

Complete Set of PDF Editing Features

Able2Extract Professional 19 users can make changes to their PDF's document information, viewing preferences, pages, content (text and images), and more. By simply clicking on the **Edit Document** tab, users can access PDF editing options and start further tailoring their documents.

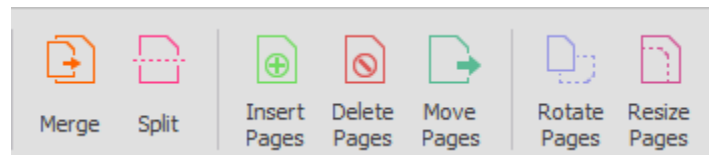
Document Properties

Users can edit **document information** (Title, Author, Subject and Keywords) as well as **viewer preferences** (hide toolbar and menubar, page mode and layout, open the document at a specific page and in a custom zoom mode, and more) by clicking on the Document Properties icon.

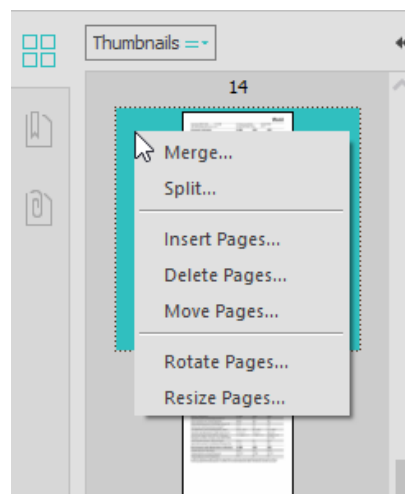


Page Editing

There are several page editing options to choose from in Able2Extract Professional 19: **Merge, Split, Delete, Move, Resize, Rotate** pages. Users can also **Insert blank pages** and undo or redo the last page editing operation in a PDF.

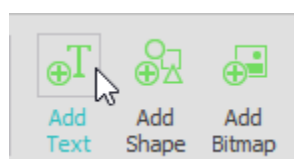


Users can also access PDF page editing through the **right-click context menu** in the **Thumbnails panel** on the left side of the interface.

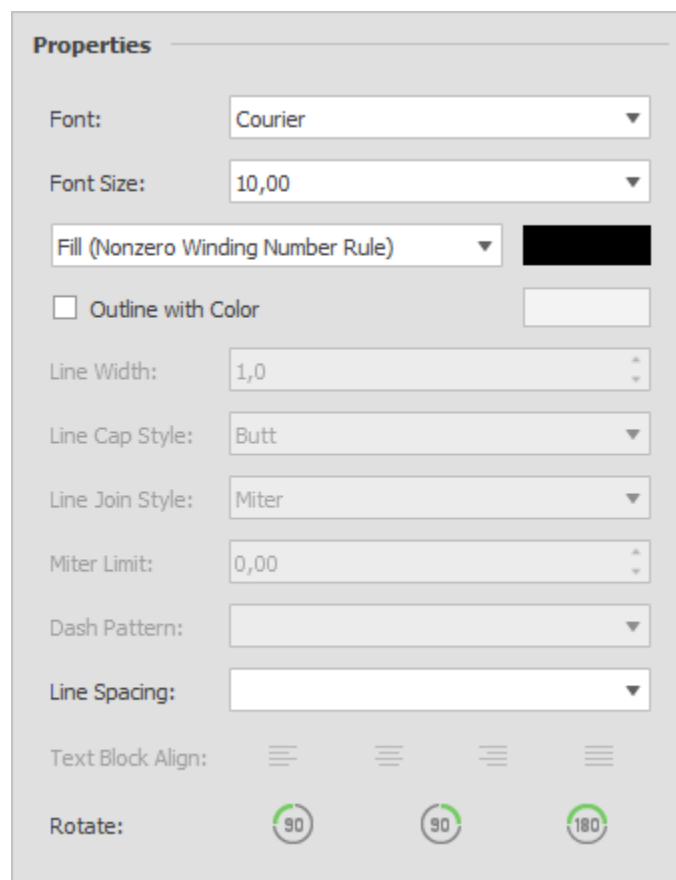


Text Editing

Able2Extract Professional 19's capabilities include **on-page PDF text editing**. Users can modify text and blocks of text directly in Able2Extract Professional. To add a new text block, click on the **Add Text** icon in the Main toolbar.



By using the Side panel options under the **Properties** section, users can specify the font style, adjust the font size, and change the text color and outline. When editing blocks of text or multiline text objects, users can also adjust the alignment, line spacing, and rotation.

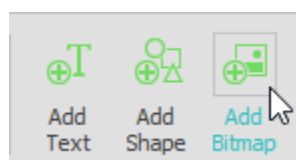


The image shows a 'Properties' panel with various settings for text and shapes. The settings include:

- Font: Courier
- Font Size: 10,00
- Fill (Nonzero Winding Number Rule): [Dropdown menu]
- Outline with Color: [Checkbox]
- Line Width: 1,0
- Line Cap Style: Butt
- Line Join Style: Miter
- Miter Limit: 0,00
- Dash Pattern: [Dropdown menu]
- Line Spacing: [Dropdown menu]
- Text Block Align: [Four alignment icons]
- Rotate: [Three rotation icons: 90, 90, 180]

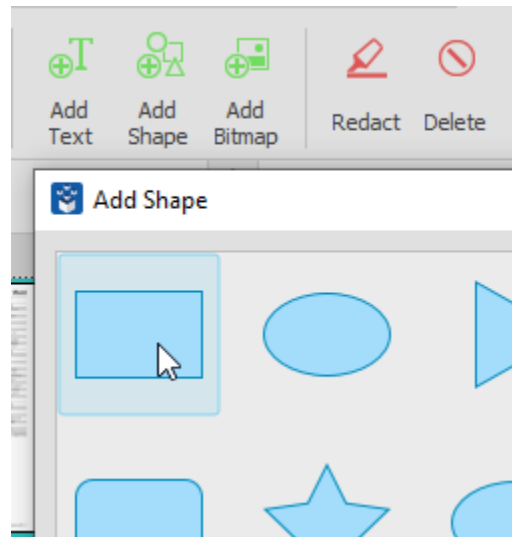
Adding Bitmap Images and Vector Graphics (Shapes)

Able2Extract allows users to add their own **bitmap images** (JPG, BMP, PNG, TIFF, and GIF) from their computer to existing PDF content – perfect for personalizing or editing material for publication.



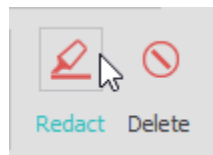
Able2Extract Professional provides users with a selection of **12 customizable vector shapes** they

can insert to visually boost their content:



Redaction

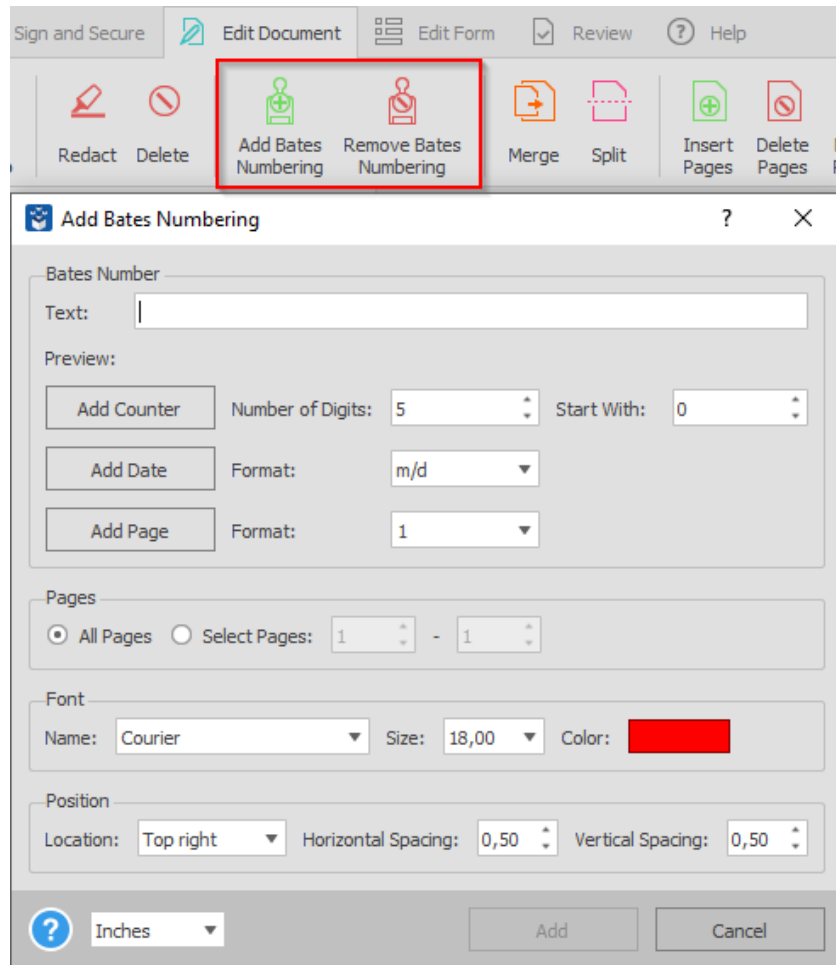
Users can selectively and permanently delete any sensitive information from the PDF document. Able2Extract Pro 19 is capable of redacting individual sections, lines and entire page content.



Insert Bates Numbering

Users needing to index PDF pages for easy reference can select from several options to **create and insert customized Bates numbering** to their PDF pages. Users can include personalized text and properly formatted date, pagination, and counter numbers. It is also possible to format the font, position, and page range to match the look and feel of the PDF itself.

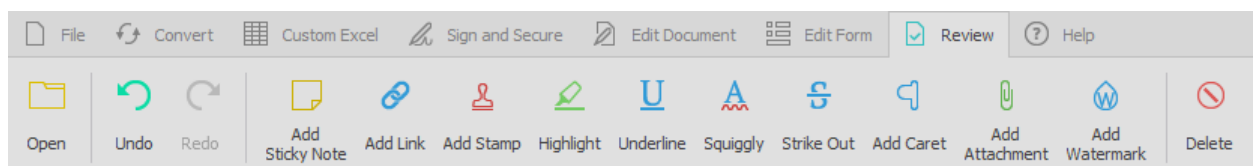
Click on the Add Bates Numbering icon to access the dialog window. To delete already applied Bates stamps, click on the Remove Bates Numbering icon.



Total Annotation Options Pack

The PDF annotation feature allows users to create and insert annotations on their PDF. In addition, they can interact, review and post replies to existing comments and annotations.

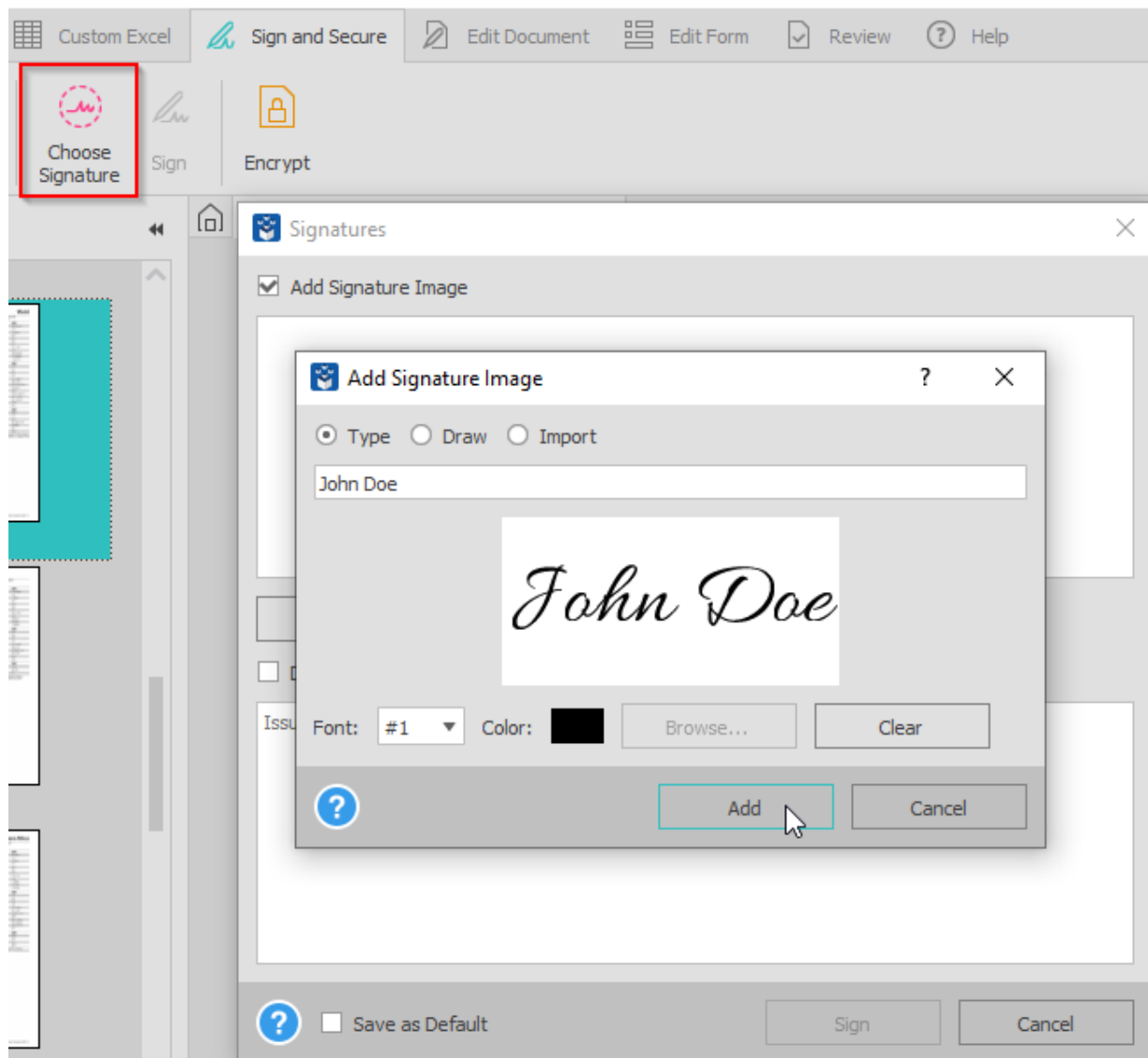
Users can digitally add **Sticky Notes**, **Links**, **Stamps**, **Highlights**, **Underlines**, **Squiggly Lines**, **Strikethroughs**, **Carets**, **Attachments**, and **Watermarks** by selecting the corresponding icons under the Review tab:



Sign and Secure PDFs Like a Pro

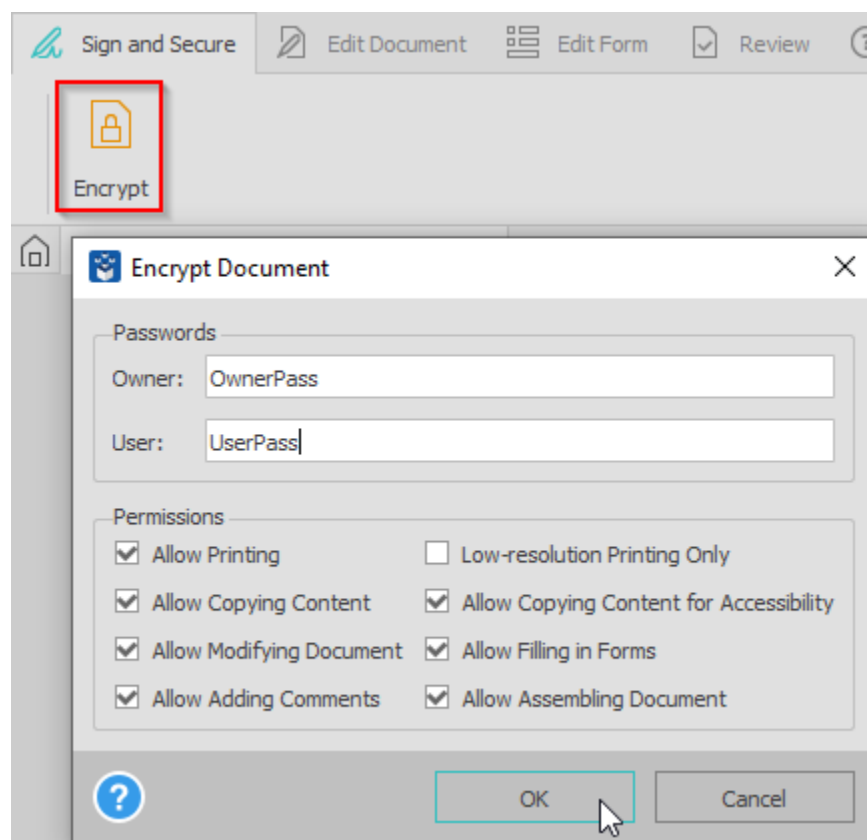
Able2Extract Professional 19 lets users **insert electronic and digital (cryptographic) signatures** to PDFs in just a few clicks. Furthermore, Able2Extract can **verify the authenticity of signed documents**.

By implementing digital signatures, users can save time and money on printing, signing, scanning, and sending paper files, maintain data integrity, and add a few extra layers of security to important PDF documents.



The latest version 19 goes above and beyond to let users apply digital signatures to multiple pages at once. This new feature could especially come in handy when working with large documents consisting of several pages. To insert a signature to multiple pages, users just need to set a page range and Able2Extract Professional will add the signature to the pages instantly.

In addition to these PDF signing features, users can **encrypt or decrypt** existing PDF documents depending on the state of the opened PDF file.



They can **set passwords and file permissions** as needed. For instance, users can open a PDF, make revisions or last minute redactions, and then encrypt the document for secure sharing with third parties.

These features are available in the Sign and Secure tab.

All-in-one PDF Forms Tool

With Able2Extract's **PDF form filler**, users can work with PDF forms directly in the application – complete digital forms without having to print, manually fill in, and then rescan forms back in again. **PDF forms editor** allows users to **create PDF forms** from scratch, edit existing ones, and control PDF form field placement. Align and center form fields with pinpoint precision so your business PDF forms are perfectly formatted every single time.

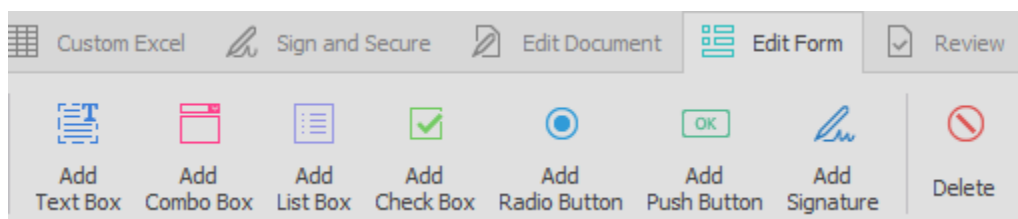
Filling PDF Forms

To start filling PDF forms in Able2Extract, users simply open the PDF form in the application and start entering data by clicking on the form (**File, Sign and Secure, or Help tab must be active to activate the PDF form filling feature**).

They can type in text fields, click on the radio buttons or checkboxes, and select items from both list and combo boxes. Even push buttons are fully functional in Able2Extract. Users have the option of saving half-filled PDF forms or submitting a completed form back to servers.

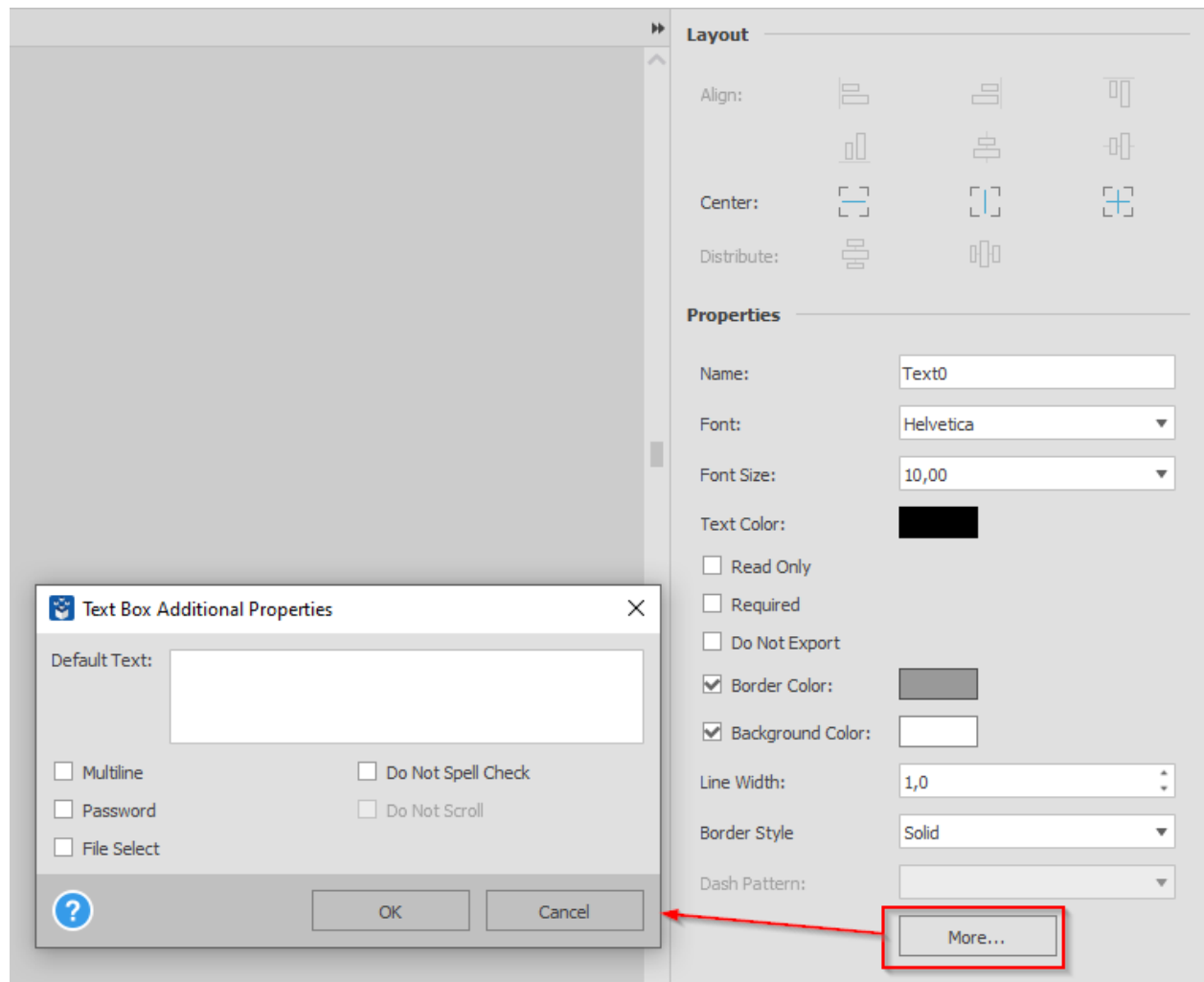
Editing and Creating PDF Forms

Editing and creating PDF forms is just as easy. When in the **Edit Form tab**, users can insert a form field by clicking on the icon in the Main toolbar and then clicking onto the page where they wish to place it. Form fields can be customized, populated, and assigned values. To create PDF forms for submission, users need to set up a server to collect the data. Submission settings can be specified when the Push button is added to the form.



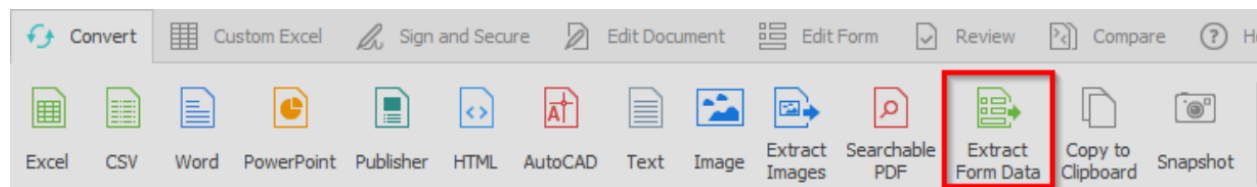
Layout and Properties sections in the Side panel offer advanced options and additional

properties for customizing PDF forms.



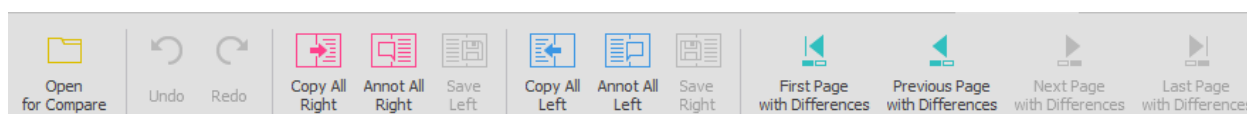
Exporting PDF Forms Data to CSV

Able2Extract Professional 19 comes with a new extraction functionality that allows users to quickly and easily export essential PDF form data into a CSV file.

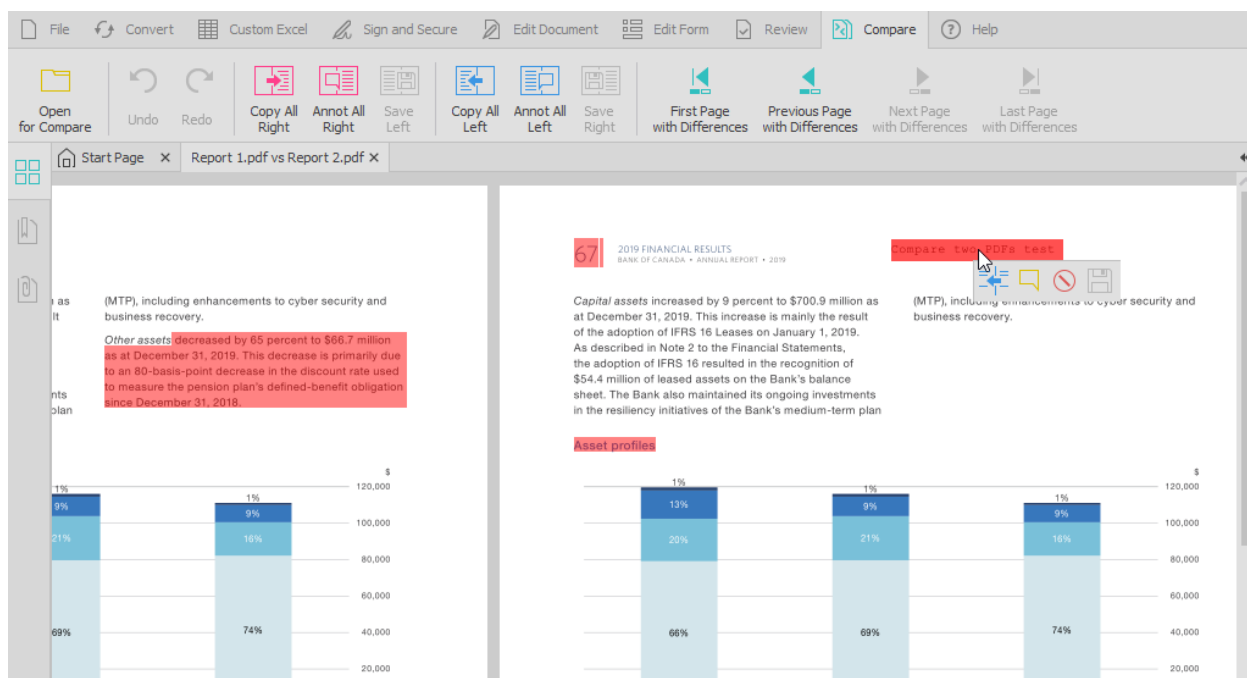


Document Comparison Tool

With the Document comparison tool, users can **open and compare any two printable documents side-by-side**. The comparison tool highlights all differences between the documents, enabling users to quickly locate and examine all changes in the documents and avoid the tiresome process of comparing them line by line.



Users can use the tools from the Compare toolbar to navigate around specific pages with differences, copy differences from one document to another, annotate all differences in one document or another, and save the changes in one document or another. There is also a handy context menu that shows up once the user hovers over a certain highlighted difference, allowing them to copy, highlight, delete, and save the highlighted difference.



Advanced PDF Features

Able2Extract Professional comes with a **set of advanced features** that separates it from other PDF tools. They have been developed and are being constantly improved to provide users with powerful ways to boost productivity and save time & money.

Custom PDF to Excel Conversion

Able2Extract Professional 19 offers **advanced PDF to Excel conversion options** to MS Excel users, allowing them to manually specify the column and row structure within their PDF spreadsheet and preview the PDF to Excel results prior to starting the conversion.

Being such an important and powerful feature, it has a separate **Custom Excel tab**.

The screenshot displays the Able2Extract Professional 19 software interface. The main window shows a PDF document titled "World Statistics Pocketbook 2019.pdf". The document content is a table of economic indicators for the years 2005, 2010, and 2019. The table is organized into sections: "Economic indicators", "Social indicators", and "Environment and infrastructure indicators". The "Economic indicators" section includes rows for GDP, GDP growth rate, GDP per capita, employment, and labour force participation. The "Social indicators" section includes rows for population growth, urban population, fertility rate, life expectancy, and population age distribution. The "Environment and infrastructure indicators" section includes rows for forested area, CO2 emission estimates, energy production, and energy supply per capita. The interface also features a sidebar on the right with various settings and options, including "Named Table Structures", "Page Range", "Tables", "Columns", "Rows", "Header and Footer", and "View". The "Page Range" section shows the current page range as "15 - 15". The "Tables" section shows a table structure with columns for "Table Structure #1". The "Columns" section shows a table structure with columns for "Table Structure #1". The "Rows" section shows a table structure with rows for "Table Structure #1". The "Header and Footer" section shows a table structure with rows for "Table Structure #1". The "View" section shows a table structure with rows for "Table Structure #1".

There are a number of options for Excel users that help them customize their file and avoid column misalignment within the table. They can: **add, delete and replot tables, manage named table structures, add columns and erase column lines, manually edit rows**, etc.

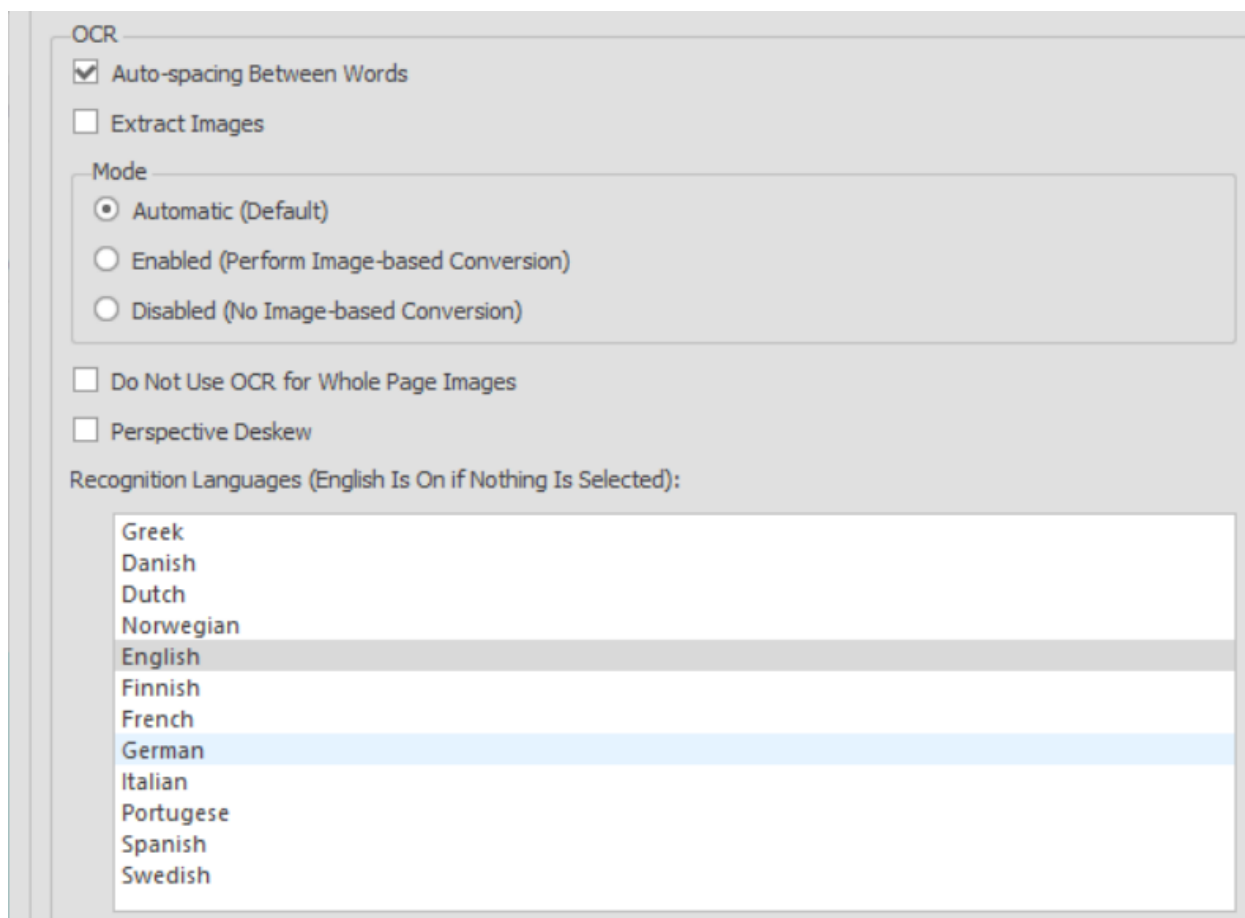
Able2Extract users can enhance PDF to Excel conversions even more with **AI-powered templates**. Custom Excel templates can be trained to automatically locate and convert PDF tables that match the table structure stored in a template, making tabular data extraction accurate and easy no matter how long the source document is or the position of tables in a PDF document.

Able2Extract Pro also has a **Smart Layout Detector** that continually inspects various table and cell properties to ensure accurate extraction with minimal formatting differences. Transferred borders, background colors, and fonts are faithful to the original document.

OCR Technology

Investintech uses advanced OCR technology that can convert even poorly scanned documents or electronically created files that contain damaged fonts and don't convert well via the standard conversion.

In this latest version, we've expanded the list of supported languages by adding support for **Italian, Portuguese, Greek, Danish, Dutch, Norwegian, Finnish, and Swedish** making it possible to recognize and extract the special characters common to these languages. Able2Extract Professional 19 now recognizes and converts special characters in **twelve different languages**.



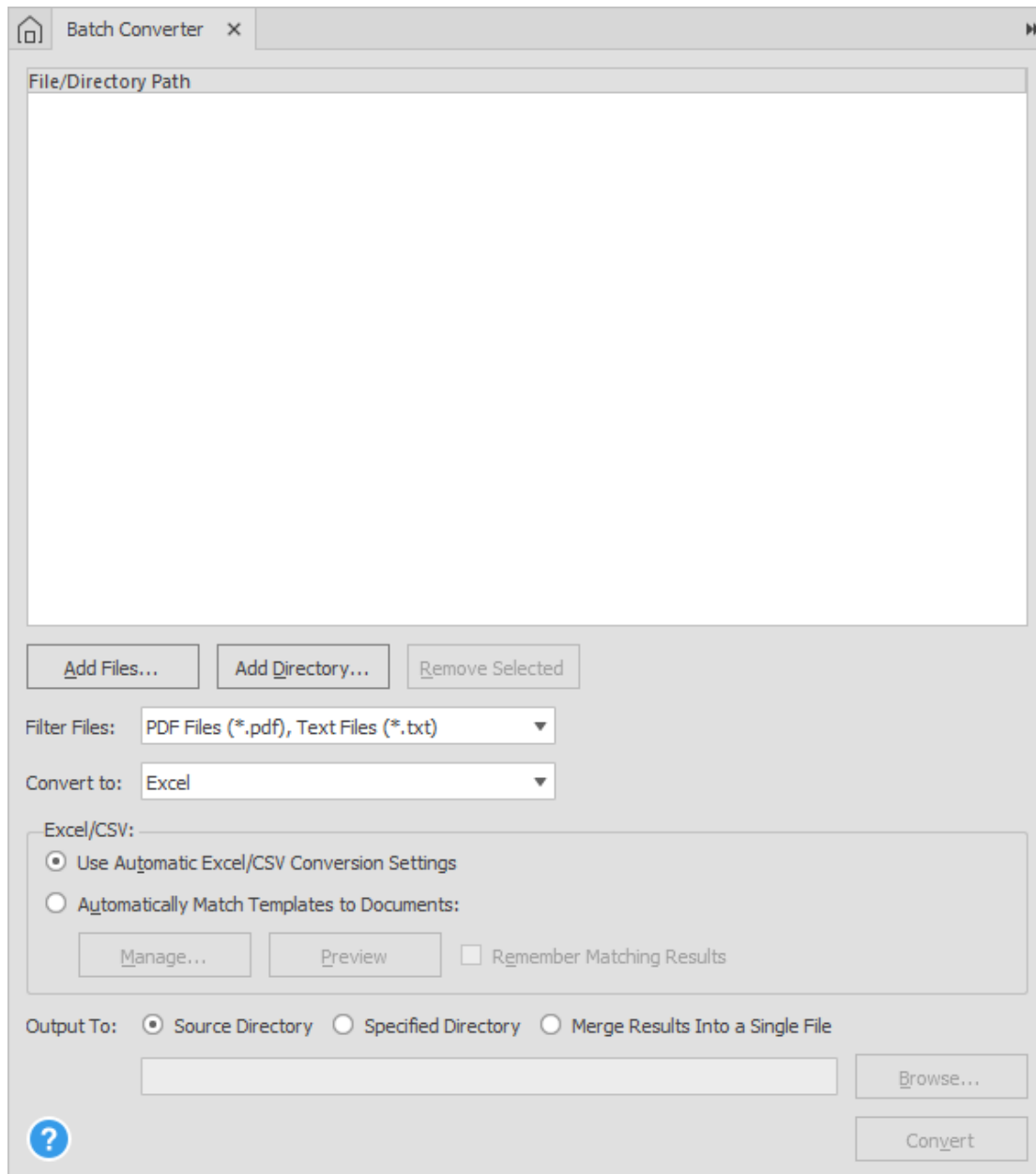
Users can make use of the convert to **Searchable PDF** functionality thanks to the OCR technology implemented in Able2Extract. This feature can convert image-only PDF documents into a PDF with text that can be searched using the Search functionality. Able2Extract Professional will modify the PDF document with an invisible text layer for this purpose. No new output file will be generated.

The process of converting scanned (image) documents in Able2Extract Professional is the same as any native PDF conversion process. Once you open a PDF file, the application will, by default, **automatically detect if the file is a scanned PDF or not**. You can then convert them to desired output format in the same manner.

The OCR engine in Able2Extract PRO 19 is now enhanced with a recognition algorithm that improves the conversion quality of text and graphical elements from partially selected pages.

Batch Conversion

The Batch conversion option in Able2Extract is **available for both native and scanned PDF documents**. To start, users can choose the Batch feature from the Convert tab's Main toolbar. Users can add as many PDF files and directories in the Batch conversion dialogue box as they want. Able2Extract Professional will scan the uploaded directories and convert all the PDF files it finds.

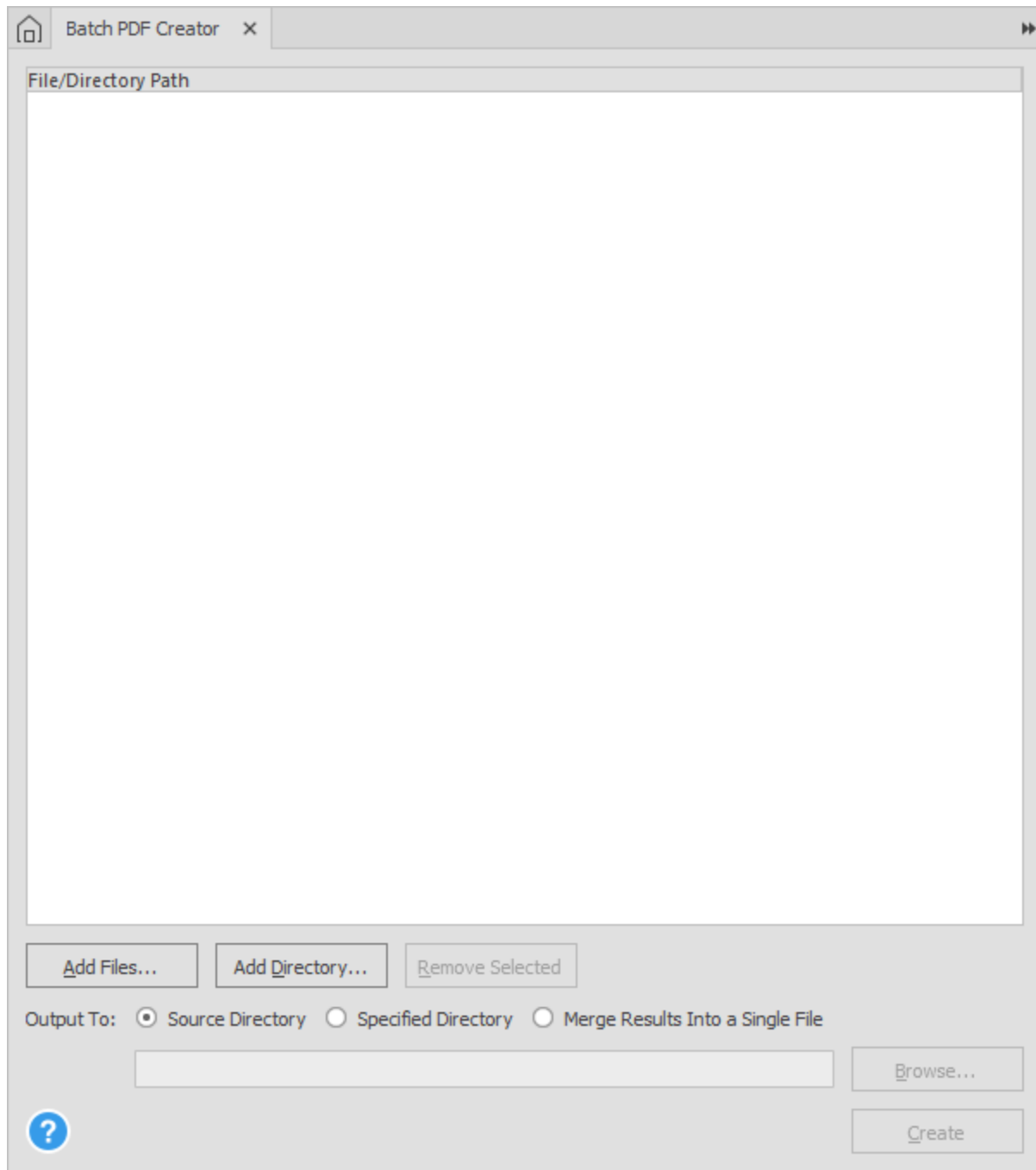


Users can then either browse through their computer locations to select an output folder or designate it as the source folder. Users can convert PDFs to any of the available conversion formats: **Excel, Word, PowerPoint, Publisher, AutoCAD, CSV, text, and HTML**. Then lastly, users can **choose the output to be a separate file for every PDF uploaded or a single document** consisting of individually converted and merged PDFs.

AI-powered templates can also be used when converting multiple PDFs to Excel and CSV. Users can enjoy the effectiveness of Custom Excel templates and speed of Batch conversion merged into one powerful feature.

Batch Creation

In similar fashion, users can **create PDFs from multiple files** thanks to a powerful Batch creator tool. It also comes with the **ability to produce a single-file output by merging created PDFs** before completing the conversion from 300+ printable file formats to PDF.



Premium Support

Users who subscribe to Investintech's **Software Advantage Plan** can enjoy additional customer benefits in the form of **priority support via phone and email, exclusive early access to software updates and upgrades, and web portal account** that will allow them to view the status of their requests and find information on new product updates and upgrades available for download.

Free support is available to all Able2Extract Professional customers, but Software Advantage Plan subscribers who report an issue have the advantage of skipping to the front of the line and becoming a top priority for the members of Investintech's support staff.

More info on Investintech support plans here: <https://www.investintech.com/support/about/>

ABOUT INVESTINTECH.COM

Investintech.com is a leading PDF software developer, offering high-performance desktop PDF solutions to their users. Many bank and finance experts, engineers, educational technologists, and other business professionals use Investintech's flagship product, **Able2Extract Professional**, for **Everything PDF**.

Able2Extract Professional's cross-platform functionality and multi-language support, a complete set of PDF features, new and improved interface, and powerful custom conversion options make it a valuable tool in increasing work productivity and saving time.

With offices in Canada and Europe, Investintech.com gathers a team of devoted, skilled professionals who take pride in delivering the best software products and customer support to their software users.

Contact Us

Customer Support:

Telephone	+1 604 200 4366
Hours	9 am - 6 pm EST (GMT - 5:00), Monday-Friday
Email	cs@investintech.com

Technical Support:

Email:	Product related issues - investintech_support@pdftron.com
	Site related issues - webmaster@investintech.com
Hours:	9 am - 6 pm EST (GMT - 5:00), Monday-Friday

Mailing Address:

Mail: Investintech.com Inc.
500-838 West Hastings Street
Vancouver, BC
Canada V6C 0A6

Website address: <https://www.investintech.com>

Connect with Investintech.com on social networks:

Facebook: <https://www.facebook.com/Able2Extract>

X (former Twitter): <https://www.twitter.com/able2extract>

LinkedIn: <https://www.linkedin.com/company/investintech>

YouTube: <https://www.youtube.com/user/Able2Extract>

Pinterest: <https://pinterest.com/Able2Extract/>

Follow Investintech's PDF blog for tips, tricks, document management and productivity hacks:

<https://www.investintech.com/resources/blog/>