

Investintech.com Inc. PDF2Word Command Line Tool User's Guide

May 23, 2007
<http://www.investintech.com>

Copyright 2007 Investintech.com Inc. All rights reserved.

Contents

Preface	1
About This Documentation.....	1
Typographical Conventions Used in This Document.....	1
Getting More Information.....	1
Customer Service and Technical Support.....	2
Fax and Mailing Address	2
PDF2Word Command Line.....	3
What is Command Line?	4
What is PDF2Word Command Line?.....	4
Installation Instructions for PDF2Word	4
System Requirements.....	4
Starting the Installation	5
Using PDF2Word	12
Using PDF2Word from Command Prompt	12
Conversion type	14
Schedule.....	15
Range	15
Input file(s)	16
Output file(s).....	16
Examples of Using PDF2Word.....	16
Example #1	16
Example #2	17
Example #3	17
Example #4	18
Example #5	18
Troubleshooting.....	19
Index	21

Preface

- Welcome to Investintech.com Inc. PDF2Word Command Line. This tool provides technologies for converting PDF files into file formats recognized by Microsoft® Word. This user's guide provides the basic information needed to use the command line tool.

About This Documentation

This documentation describes the purpose, installation and usage of the PDF2Word command-line program that allows users to convert PDF files into various formats (Word, RTF).

Typographical Conventions Used in This Document

The following table describes typographical and naming conventions used in this document:

<i>Font</i>	<i>Used for</i>	<i>Examples</i>
monospaced	Expected input from the user	pdf2Word -help
	Paths and filenames	c:\investintech\pdf2Word.exe
	Source code	MessageBox("ABC");
monospaced blue	Source code keywords	if
monospaced green	Source code comments	//this is a comment
monospaced bold	Method name	The AboutBox() method
'Single quoted bold'	Elements of the user interface like buttons, icons etc.	click on ' Start ' button, press ' Enter '
blue underlined	Internet links	http://www.investintech.com

Getting More Information

Investintech.com Inc. conducts research in data conversion technology and develops data conversion products utilizing results of the research. More information about our company is available at the company's website <http://www.investintech.com>.

Customer Service and Technical Support

Investintech.com Inc. strives to provide the best possible technical support to its customers and prospective customers. If you would like personal assistance, please feel free to call us or send e-mail to Customer Service or Technical Support. We are available by phone during regular business hours and in the vast majority of cases, we will return our e-mail with an answer the same day it is received.

	<i>Customer Service</i>	<i>Technical Support</i>
Telephone:	+1 416 920 5884	+1 416 920 2539
E-mail:	cs@investintech.com	techsupport@investintech.com
Hours:	Our Business Hours are Monday to Friday 9am-6pm (Eastern Time GMT-5:00).	

Fax and Mailing Address

Mailing Address: Investintech.com Inc.
410-96 Spadina Avenue
Toronto, ON
M5V 2J6 Canada

Fax: +1 416 920 5848

Investintech.com Inc. Software Development Kit User's Guide

PDF2Word **Command Line**

What is Command Line?

Microsoft Windows operating system is graphical user interface (GUI) operating system – commands are usually given by using mouse to interact with graphical elements on screen and results are visible through changes on graphics drawn on computer screen. Microsoft DOS is command line interface operating system – commands are typed on keyboard, executed when ‘**Enter**’ key on keyboard is pressed and results are visible in text mode on screen.

While GUI is generally better way of using computers, there are few cases where command line is much better solution for particular need – like when we want to repeat same command over and over again.

In order to get command line interface window in any version of Windows, click on ‘**Start**’ (usually at lower left side of screen), point to ‘**All Programs**’, then point to ‘**Accessories**’ and click on ‘**Command Prompt**’ (or ‘**MS DOS Prompt**’ in older versions of Windows).

What is PDF2Word Command Line?

PDF2Word Command Line is command line, shell or batch version providing a subset of features found in Able2Doc. It may be used to automate the conversion of multiple documents.

The demo version of PDF2Word is available, free of charge, for download from our company website, <http://www.investintech.com>

Installation Instructions for PDF2Word

Below you will find step-by-step instructions to install PDF2Word Command Line on your system. You may want to print this instruction sheet for reference before beginning to install PDF2Word.

System Requirements

The minimum computer system resources required to install and run PDF2Word are:

- Microsoft Windows 98/Me/2000/XP/2003
- 64 MB of RAM
- 4 MB of available hard disk space

In order to use PDF2Word comfortably, it is recommended that your computer system meet the following requirements:

- Microsoft Windows 98/Me/2000/XP/2003
- 512 MB of RAM
- 100 MB of available hard disk space

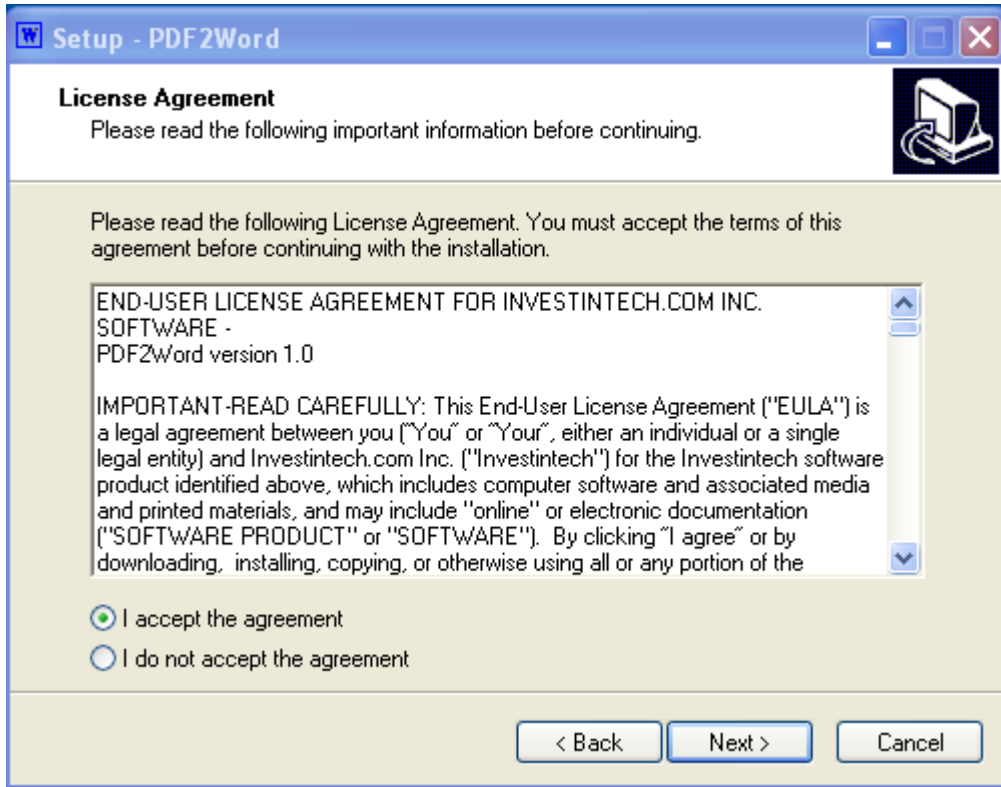
PDF2Word Command Line

Starting the Installation

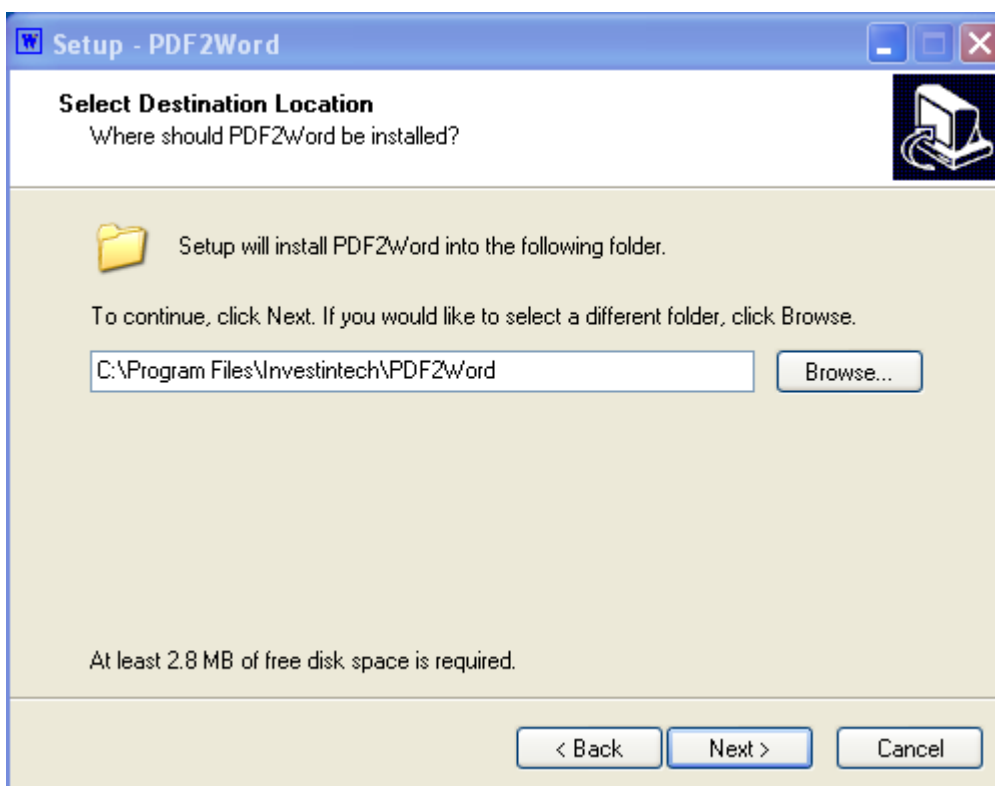
Start the installation by launching the `InstallPDF2Word.exe` file, e.g. by double clicking it in the Windows Explorer. After that you should see a window that looks like this:



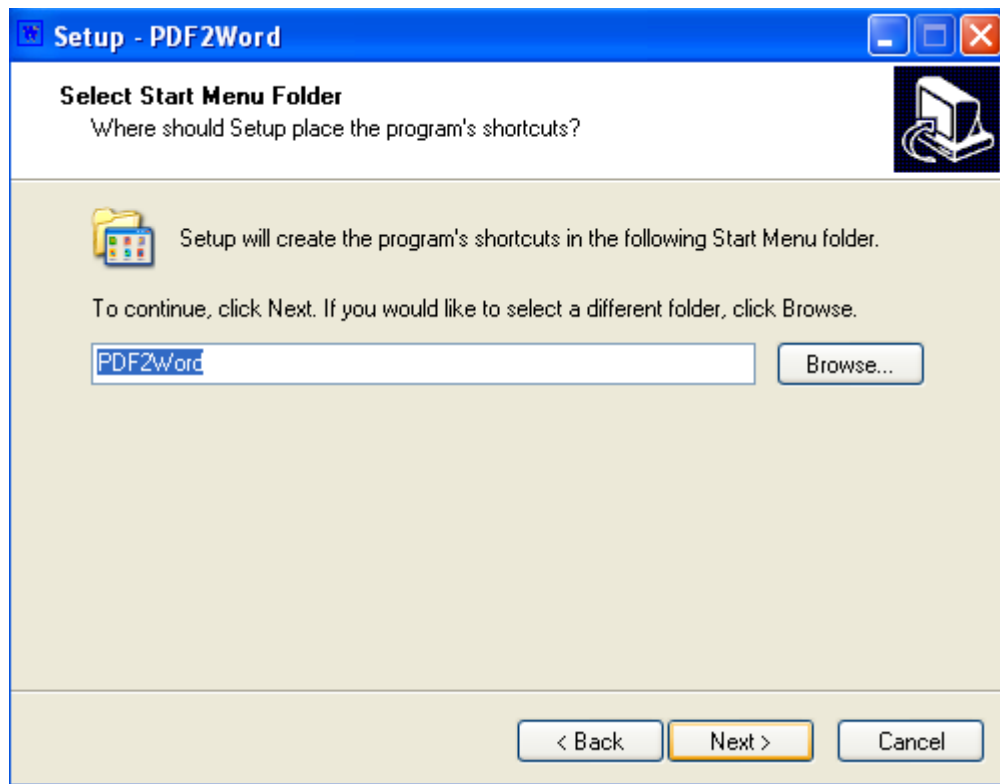
Click the 'Next' button to continue installation. You should see the next window:



Please read the Investintech Software License Agreement carefully and thoroughly. If you wish to continue with installation, choose **'I agree with the above terms and conditions'** and click **'Next'**. Otherwise, click **'Exit'** and installation will terminate. If you clicked **'Next'** you should see the next window:

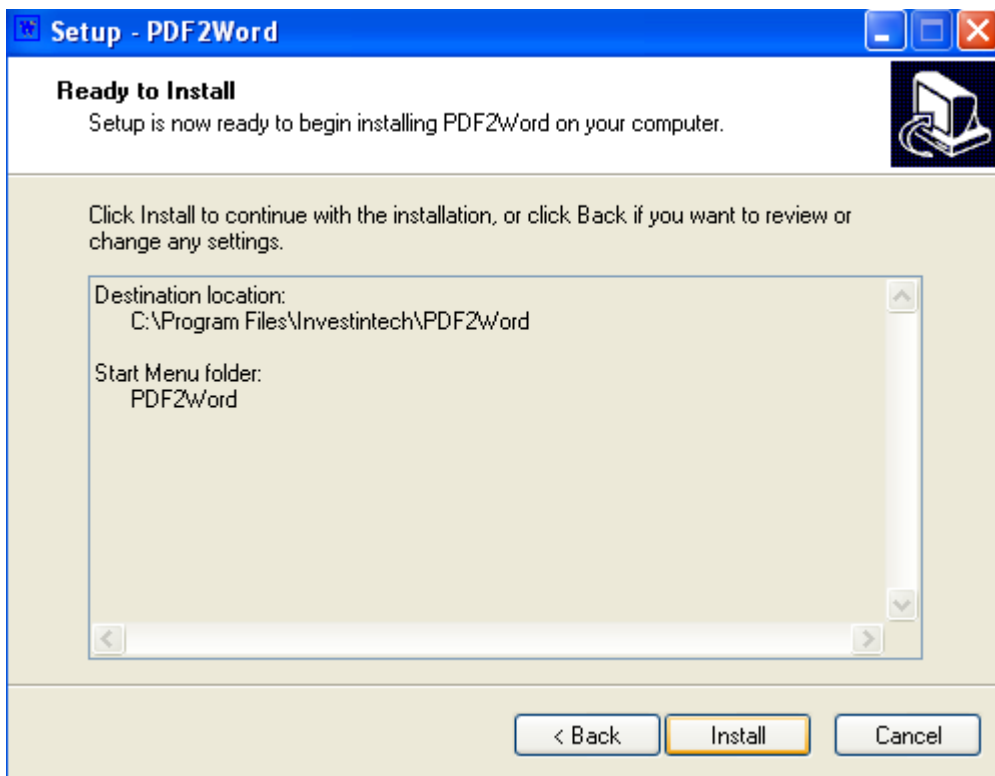


On this screen you can choose the installation directory for the PDF2Word software. The default installation folder will be contained in the `Program Files` folder on your system disk. It is possible to change the location of installation folder either by typing its path directly or by clicking the 'Browse...' button. If the destination folder (directory) you have chosen does not exist, the installation program will create it. Click the '**Next**' button to continue the installation.



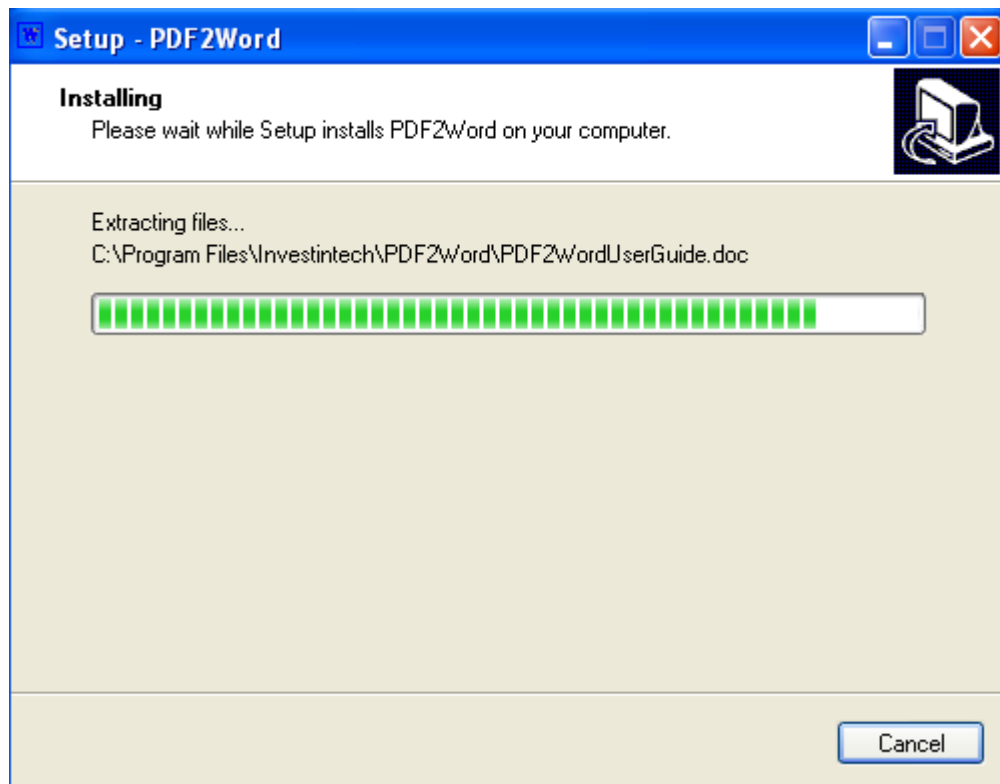
This screen prompts you for the for the start menu folder containing shortcuts to PDF2Word. You may accept the default folder name, type a new folder name, or browse existing folders by clicking the “Browse...” button. Click the ‘Next’ button to continue the installation.

PDF2Word Command Line

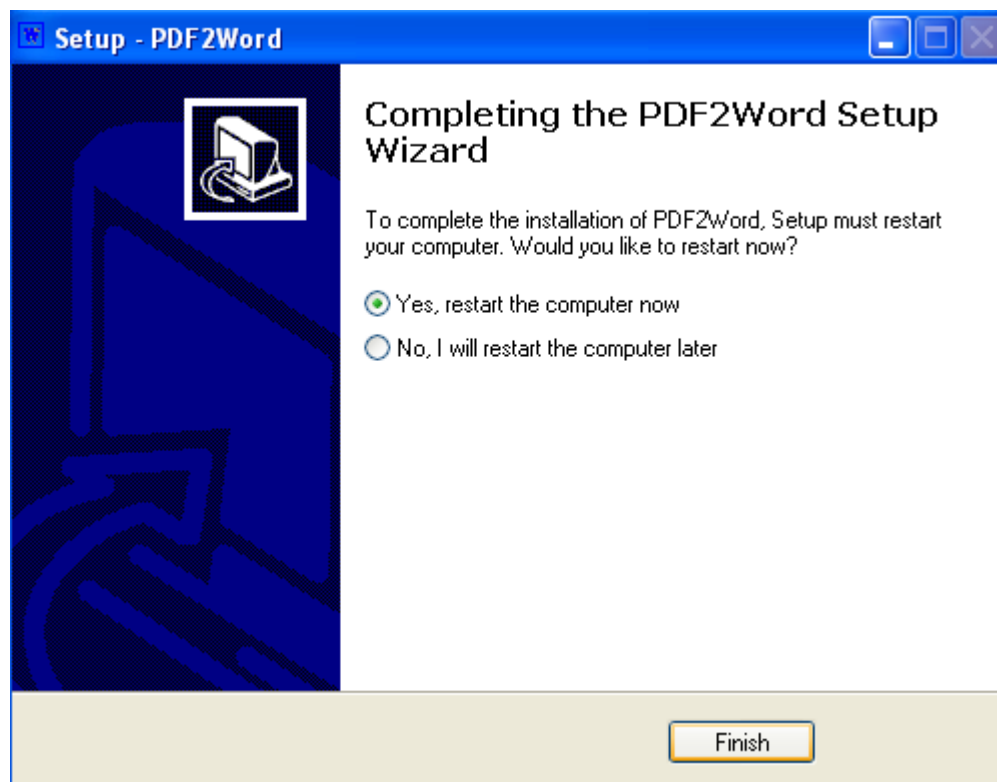


Clicking the **'Install'** button will start the installation.

PDF2Word Command Line



Setup will install the PDF2Word Command Line product on your computer. After a very short period of time, usually about 30 seconds, you should see the next window:



The installation is now finished. Click '**Finish**' to finish the installation.

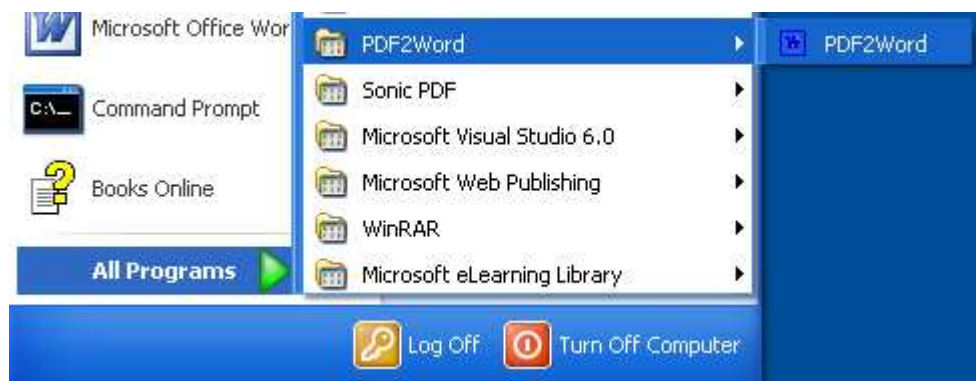
Using PDF2Word

This section provides detailed information about using PDF2Word software. The following topics are covered:

- using PDF2Word from command prompt
- using PDF2Word for batch conversion

Using PDF2Word from Command Prompt

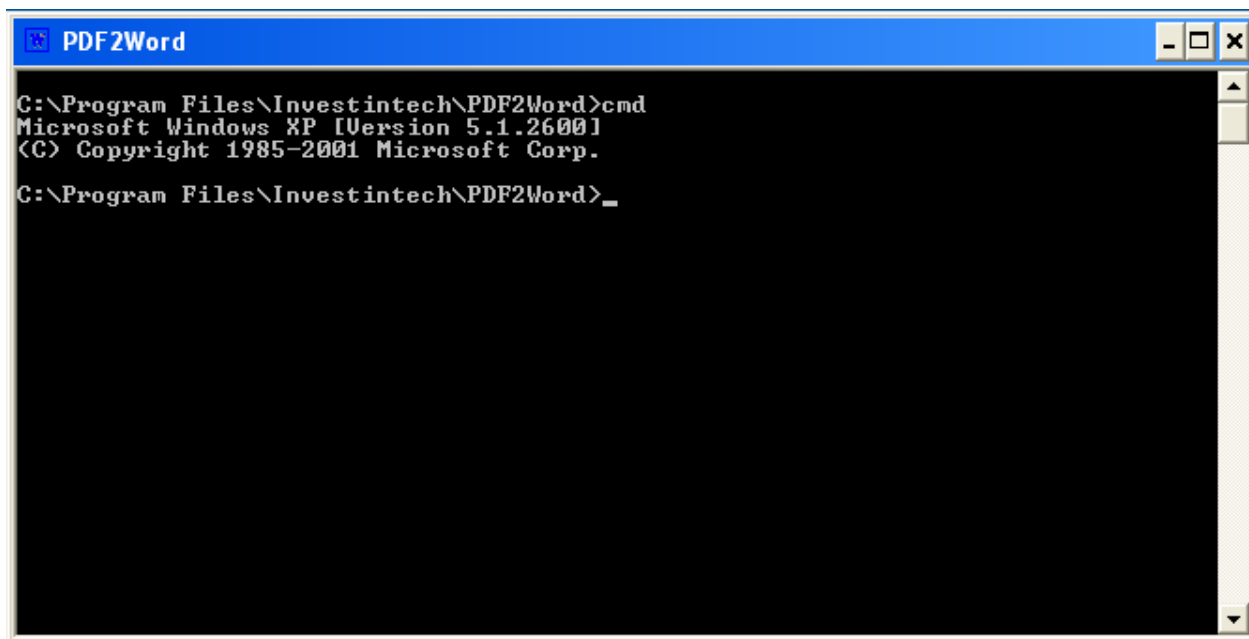
Prior to using PDF2Word, you must open a command prompt window. To open the command prompt window:



- Click the '**Start**' button, then point to '**All Programs**', then point to '**PDF2Word**' and finally point and click on the '**PDF2Word**' menu item.

PDF2Word Command Line

The window titled “PDF2Word” should open, as shown.

A screenshot of a Windows command prompt window. The title bar is blue and contains the text 'PDF2Word' followed by standard window control buttons (minimize, maximize, close). The main area is black with white text. The text displayed is: 'C:\Program Files\Investintech\PDF2Word>cmd', 'Microsoft Windows XP [Version 5.1.2600]', '<C> Copyright 1985-2001 Microsoft Corp.', and 'C:\Program Files\Investintech\PDF2Word>_'. There is a vertical scrollbar on the right side of the window.

```
C:\Program Files\Investintech\PDF2Word>cmd
Microsoft Windows XP [Version 5.1.2600]
<C> Copyright 1985-2001 Microsoft Corp.
C:\Program Files\Investintech\PDF2Word>_
```

To display the PDF2Word help message, simply type PDF2Word and press ‘**Enter**’.

```

PDF2Word
Copyright 2007 Investintech.com Inc. All rights reserved
Unlimited edition

Usage:
  PDF2Word -c<convert> [-s<schedule>] [-p<range>] -i<input> -o<output>

  where:
  <convert> specifies type of conversion operation
  <schedule> is time at which conversion will occur
  <range> indicates page range
  <input> specifies input pdf document (may include wildcards)
  <output> specifies target output file path and extension

  Note: input and output files must contain full type extension
  Wild cards:
  ?      Matches any single character in document name
  *      Matches 0 or more characters in document name
  Conversion types:
  simple Convert PDF to RTF Simple format
  frame  Convert PDF to RTF Frames format
  standard Convert PDF to RTF Standard format

Example:
  PDF2Word -cstandard -ic:Source.pdf -od:Target.rtf
  PDF2Word -cframe -ic:Source.pdf -od:Target.rtf
  PDF2Word -csimple -ic:*.pdf -od:*.rtf
  PDF2Word -cstandard -s3PM -ic:Source.pdf -od:Target.rtf
  PDF2Word -cframe -p5-9,15 -ic:Source.pdf -od:Target.rtf
  PDF2Word -csimple -p5-9,15om -ic:Source.pdf -od:Target.rtf
  PDF2Word -cstandard -p4-12,16 -ic:Source.pdf -od:Target.rtf
  PDF2Word -cframe -p4-12,16e -ic:Source.pdf -od:Target.rtf

  -h or -help This help

G:\Program Files\Investintech\PDF2Word>
    
```

The help message describes command usage, some examples and possible conversion types. The command line format is of the form:

```

PDF2Word -c<conversion_type> [-s<schedule>] [-p<range>]
-i<input_file(s)> -o<output_file((s))>
    
```

Conversion type

This parameter determines source and destination file formats. Source file is the file you want to convert. Destination file is the file in which results of the conversion will be put into. It is important to know that the source file will remain intact. Possible source file formats are Portable Document Format (PDF). Possible destination file formats for PDF source are RTF Simple, RTF Standard, and, RTF Frames.

Following table shows the possible values of the -conversion_type parameter:

Conversion type	Description
-csimple	Converts PDF file to RTF Simple (text file with minimal formatting).

PDF2Word Command Line

-cstandard	Converts PDF file to RTF Standard (text file with formatting).
-cframe	Converts PDF file to RTF Frame (text file with frame formatting).

Schedule

This optional argument allows you to automate a one-off or recurring conversion operation at some time in the future.

A valid PDF2Word schedule parameter excludes whitespace and is of the form:

time[/EVERY:date[,...]/NEXT:date[,...]]

where time is a colon delimited 24 hour time specified to the nearest second e.g.
hh:mm:ss

hour: 00 - 23

minute: 00 - 59

second 00 - 59

date either a day of the week e.g. M,T,W,Th,F,S,Su

or a day of the month e.g. 1,2,3,...31

/EVERY clause, /NEXT clause are optional but only one optional clause is permitted

PDF2Word will construct a valid AT command format e.g.

```
AT [\\computername] time [/INTERACTIVE] [ /EVERY:date[,...] | /NEXT:date[,...]]  
"command"
```

Range

This optional argument allows use to convert a subset of the PDF document. A continuous range of pages may be specified by the syntax: <starting page>-<ending page> where <starting page> - <ending page> are valid page numbers in the document and the starting page occurs before the ending page.

Example: 10-20

A list of pages may be specified with the syntax: <page i >,<page j>,<page k> where <page i >,<page j>,<page k> are valid page numbers in the document. In addition, you can select even numbered pages or odd numbered pages with the syntax "o" - to select odd numbered pages or "e" - to select even numbered pages.

Input file(s)

This argument determines the source file, i.e. the file you want to convert data from. Please note the following:

- You must include both file name and extension separated with the dot character ('.'). For example, file `business.pdf` consists of file name 'business' and extension 'pdf'.
- You must provide full path to the input file unless it is in the same folder as `PDF2Word.exe`. For example, if input file `business.pdf` is in `MyFiles` folder on C drive, you should type `c:\MyFiles\business.pdf` as an input file argument. If any folder name or file name in the path is longer than 8 characters or contains spaces you must surround its path with double quotation marks, e.g. `"c:\very long path\business.pdf"`

Output file(s)

This argument is a string expression determining the destination file, i.e. the file containing the results of the conversion. The naming rules used by PDF2Word are as follows. PDF2Word will use the specified directory or the current working directory if none is specified. It will use the name corresponding to the name of the source file. It will use the extension. Finally, the same path and file name rules apply for output file as well as for input file.

Examples of Using PDF2Word

Here are some cases illustrating the use of PDF2Word.

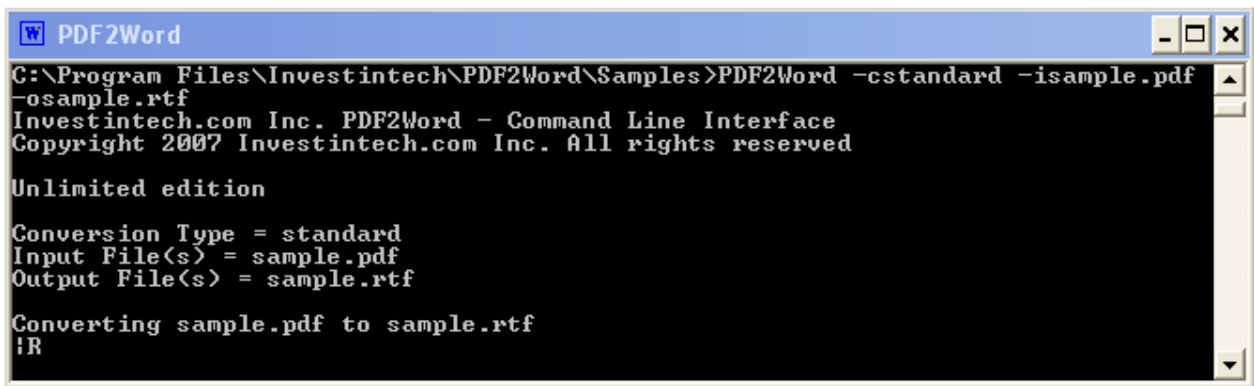
Example #1

In this example we will assume that both input and output files are in the same folder as PDF2Word. If you type

```
pdf2Word -cstandard sample.pdf sample.rtf
```

and press '**Enter**', you will convert from PDF to Rich Text Format file. The resulting RTF file can be opened by Microsoft Word. The picture below shows a successful conversion. For each converted page PDF2Word will print "[]" on the screen to let user know that it is active and working.

PDF2Word Command Line



```
PDF2Word
C:\Program Files\Investintech\PDF2Word\Samples>PDF2Word -cstandard -isample.pdf
-osample.rtf
Investintech.com Inc. PDF2Word - Command Line Interface
Copyright 2007 Investintech.com Inc. All rights reserved

Unlimited edition

Conversion Type = standard
Input File(s) = sample.pdf
Output File(s) = sample.rtf

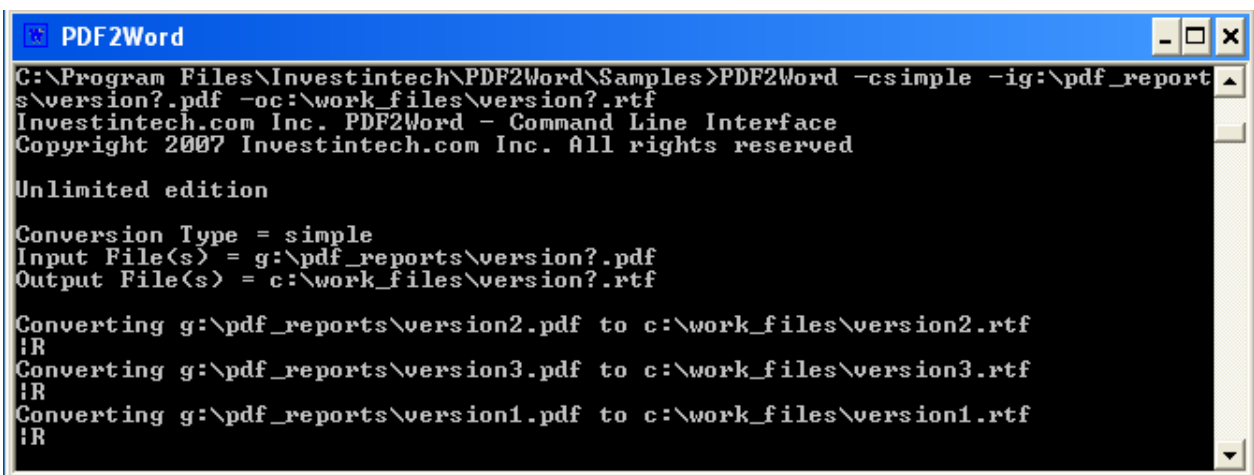
Converting sample.pdf to sample.rtf
!R
```

Example #2

In this example we will assume that directory pdf_reports on the G drive contains a series of PDF documents. Further, we assume input file is in the same folder as PDF2Word, but we want output file to be created in the different folder, e.g. c:\work_files. Plus, we want the output file to be unformatted RTF. If you type:

```
PDF2Word -csimple -ig:\pdf_reports\version?.pdf -
oc:\work_files\version?.rtf
```

and press 'Enter', you will convert the matching documents from PDF to Word. The picture below shows a successful conversion.



```
PDF2Word
C:\Program Files\Investintech\PDF2Word\Samples>PDF2Word -csimple -ig:\pdf_report
s\version?.pdf -oc:\work_files\version?.rtf
Investintech.com Inc. PDF2Word - Command Line Interface
Copyright 2007 Investintech.com Inc. All rights reserved

Unlimited edition

Conversion Type = simple
Input File(s) = g:\pdf_reports\version?.pdf
Output File(s) = c:\work_files\version?.rtf

Converting g:\pdf_reports\version2.pdf to c:\work_files\version2.rtf
!R
Converting g:\pdf_reports\version3.pdf to c:\work_files\version3.rtf
!R
Converting g:\pdf_reports\version1.pdf to c:\work_files\version1.rtf
!R
```

Example #3

In this example we wish to schedule a recurring conversion operation. If you type

```
PDF2Word -cstandard -s6:00AM/every:M,T,W,Th,F -
ig:\pdf_reports\*.pdf -oc:\work_files\*.rtf
```

and press 'Enter', you will schedule the conversion operation. The picture below shows the operation has been scheduled.

PDF2Word Command Line

<i>Error</i>	<i>Cause</i>	<i>Solution</i>
Task not scheduled when using schedule parameter	Schedule time specified incorrectly.	Use a formatted 24 hour time with valid optional recurring sub parameters e.g. -s:30:00 -s06:30:00:/next:1 -23:59:59:/every:M,T,W,Th,F
Input file is damaged or not valid PDF file!	Input file was found but it either is not PDF file or it is damaged or corrupted PDF file	If Acrobat Reader can open the file without any error message please send the file to our technical support e-mail and we will look further into the problem. If Adobe Acrobat (full version) can open the file with error message, save the file back - this way Adobe Acrobat will repair the file. Then try conversion again.

Index

PDF2Word Command Line, 3, 4

 Conversion type, 12

 Examples of Using, 14

 Input file, 14

 Installation Instructions, 4

 Output file, 13, 14

 System Requirements, 4

 Troubleshooting, 17

 Using, 11

 Customer Service, 2

 Investintech.com Inc., 1

 Technical Support, 2

ERROR: undefined
OFFENDING COMMAND: wnd

STACK:

/Ref_cmd
/Dest
-mark-