

**Investintech.com Inc.
PDFCreate Command Line Tool
User's Guide**

February 27, 2009
<http://www.investintech.com>

Copyright 2008, 2009 Investintech.com Inc. All rights reserved.

Adobe® is registered by Adobe Systems Incorporated
Acrobat® is registered by Adobe Systems Incorporated
Postscript® is registered by Adobe Systems Incorporated
Access™ is registered by Microsoft Corporation
Excel® is registered by Microsoft Corporation
Visual Basic® is registered by Microsoft Corporation
Visual C++® is registered by Microsoft Corporation
Visual C#® is registered by Microsoft Corporation
Visual J#® is registered by Microsoft Corporation
Visual Studio® is registered by Microsoft Corporation
Win32® is registered by Microsoft Corporation
Windows® is registered by Microsoft Corporation
Windows NT® is registered by Microsoft Corporation
Windows Vist™ is registered by Microsoft Corporation

Contents

Preface	1
About This Documentation	1
Typographical Conventions Used in This Document	1
Getting More Information	1
Customer Service and Technical Support	2
Fax and Mailing Address.....	2
PDFCreate Command Line	3
What is Command Line?.....	4
What is PDFCreate Command Line?	4
Installation Instructions for PDFCreate.....	4
System Requirements	4
Starting the Installation.....	5
Using PDFCreate.....	13
Using PDFCreate from Command Prompt.....	13
Conversion Types	16
Schedule	16
Input file(s).....	16
Output file(s).....	17
Ticket file	17
Examples of Using PDFCreate.....	17
Example #1	17
Example #2	18
Example #3	19
Example #4	20
Troubleshooting	22
Appendix A - Tickets	23
Index	37

Preface

- Welcome to Investintech.com Inc. PDFCreate Command Line. This tool provides technologies for converting printable files into the de facto standard known as PDF document format. This user's guide provides the basic information needed to use the command line tool.

About This Documentation

This documentation describes the purpose, installation and usage of the PDFCreate command-line program that allows users to convert a variety of file formats into PDF files.

Typographical Conventions Used in This Document

The following table describes typographical and naming conventions used in this document:

<i>Font</i>	<i>Used for</i>	<i>Examples</i>
monospaced	Expected input from the user	PDFCreate -help
	Paths and filenames	c:\Program Files\PDFCreate\PDFCreate .exe
	Source code	MessageBox("ABC");
monospaced blue	Source code keywords	If
monospaced green	Source code comments	//this is a comment
monospaced bold	Method name	The AboutBox() method
'Single quoted bold'	Elements of the user interface like buttons, icons etc.	click on ' Start ' button, press ' Enter '
blue underlined	Internet links	http://www.investintech.com

Getting More Information

Investintech.com Inc. conducts research in data conversion technology and develops data conversion products utilizing results of the research. More information about our company is available at the company's website <http://www.investintech.com>.

Customer Service and Technical Support

Investintech.com Inc. strives to provide the best possible technical support to its customers and prospective customers. If you would like personal assistance, please feel free to call us or send e-mail to Customer Service or Technical Support. We are available by phone during regular business hours and in the vast majority of cases, we will return our e-mail with an answer the same day it is received.

	<i>Customer Service</i>	<i>Technical Support</i>
Telephone:	+1 416 920 5884	+1 416 920 2539
E-mail:	cs@investintech.com	techsupport@investintech.com
Hours:	Our Business Hours are Monday to Friday 9am-6pm (Eastern Time GMT-5:00).	

Fax and Mailing Address

Mailing Address: Investintech.com Inc.
600 - 425 University Avenue
Toronto, ON
M5G 1T6 Canada

Fax: +1 416 920 5848

Investintech.com Inc. Software Development Kit User's Guide

PDFCreate **Command Line**

What is Command Line?

Microsoft Windows operating system is graphical user interface (GUI) operating system – commands are usually given by using mouse to interact with graphical elements on screen and results are visible through changes on graphics drawn on computer screen. Microsoft DOS is command line interface operating system – commands are typed on keyboard, executed when ‘**Enter**’ key on keyboard is pressed and results are visible in text mode on screen.

While GUI is generally better way of using computers, there are few cases where command line is much better solution for particular need – like when we want to repeat same command over and over again.

In order to get command line interface window in any version of Windows, click on ‘**Start**’ (usually at lower left side of screen), point to ‘**All Programs**’, then point to ‘**Accessories**’ and click on ‘**Command Prompt**’ (or ‘**MS DOS Prompt**’ in older versions of Windows).

What is PDFCreate Command Line?

PDFCreate Command Line is command line, shell or batch version providing a subset of features found in Sonic PDF . It may be used to automate the conversion of multiple documents.

The demo version of PDFCreate is available, free of charge, for download from our company website, <http://www.investintech.com>

Installation Instructions for PDFCreate

Below you will find step-by-step instructions to install PDFCreate Command Line on your system. You may want to print this instruction sheet for reference before beginning to install PDFCreate.

System Requirements

The minimum computer system resources required to install and run PDFCreate are:

- Microsoft Windows 2000/XP/2003
- 64 MB of RAM
- 35 MB of available hard disk space

In order to use PDFCreate comfortably, it is recommended that your computer system meet the following requirements:

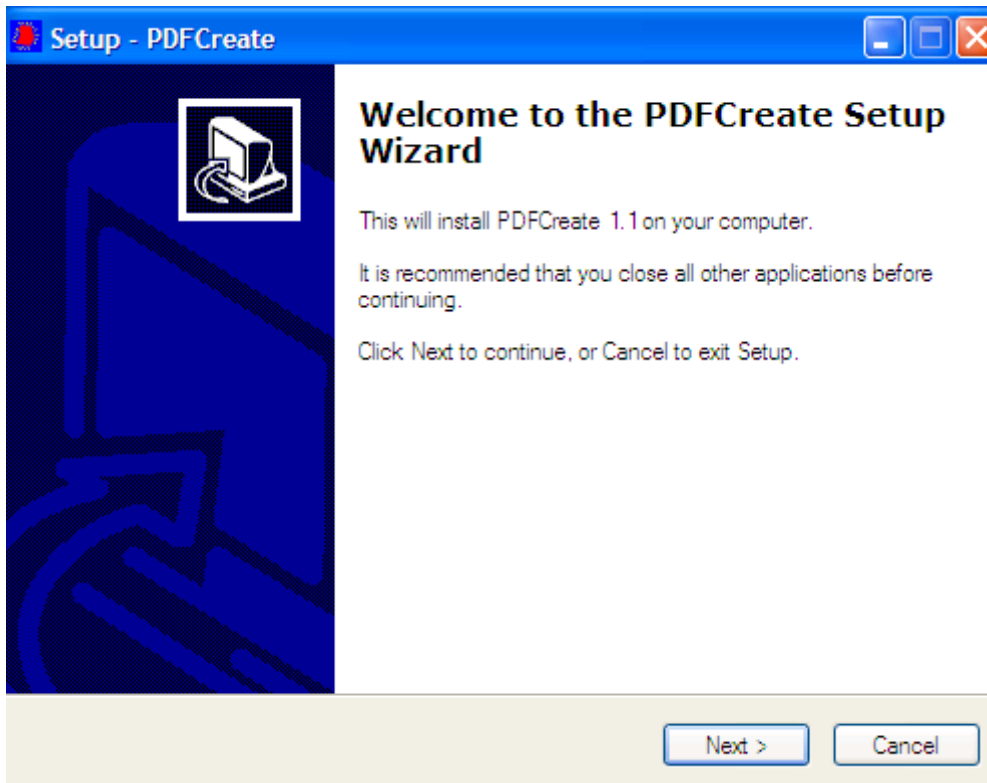
- Microsoft Windows XP/2003/Vista
- 2 GB of RAM

PDFCreate Command Line

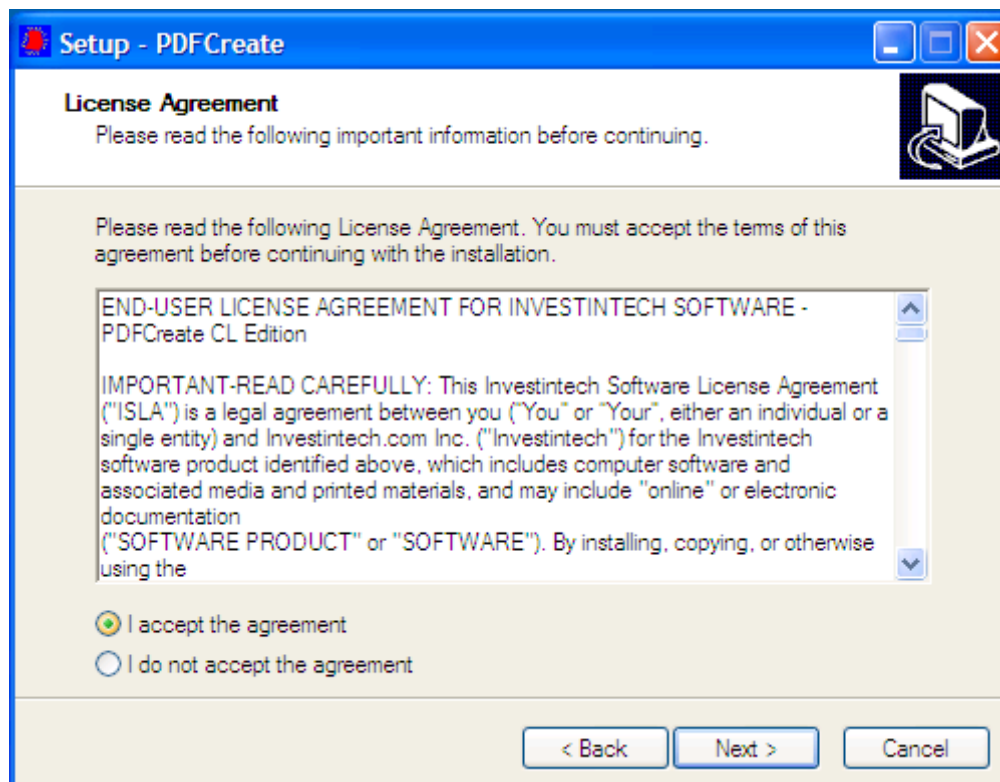
- 100 MB of available hard disk space

Starting the Installation

Start the installation by launching the `InstallPDFCreate.exe` file, e.g. by double clicking it in the Windows Explorer. After that you should see a window that looks like this:



Click the **'Next'** button to continue installation. You should see the next window:

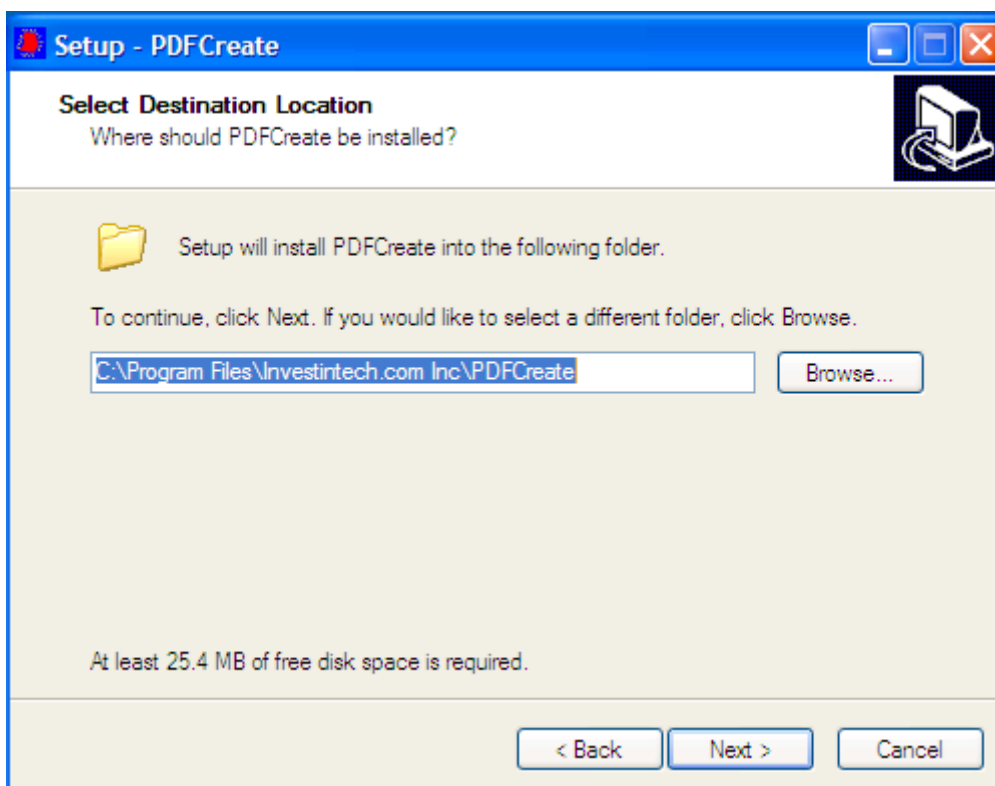


Please read the Investintech Software License Agreement carefully and thoroughly. If you wish to continue with installation, choose **'I agree with the above terms and conditions'** and click

6 Investintech.com Inc. Command Line Tool User's Guide

PDFCreate Command Line

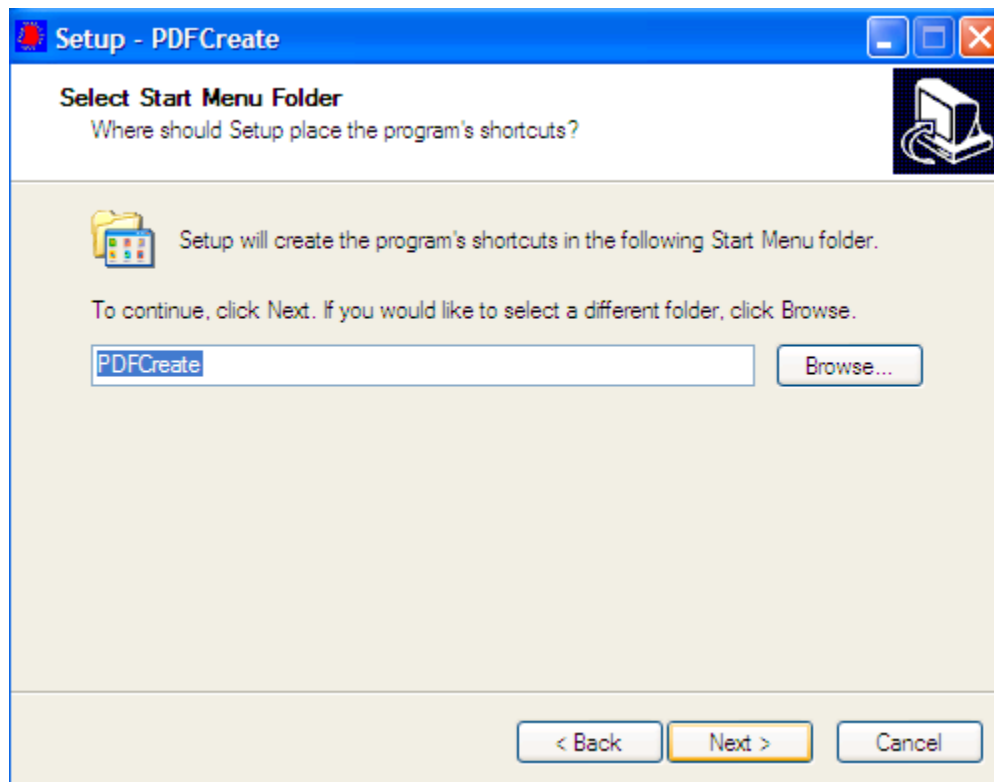
'Next'. Otherwise, click 'Exit' and installation will terminate. If you clicked 'Next' you should see the next window:



On this screen you can choose the installation directory for the PDFCreate software. The default installation folder will be contained in the Program Files folder on your system disk. It is

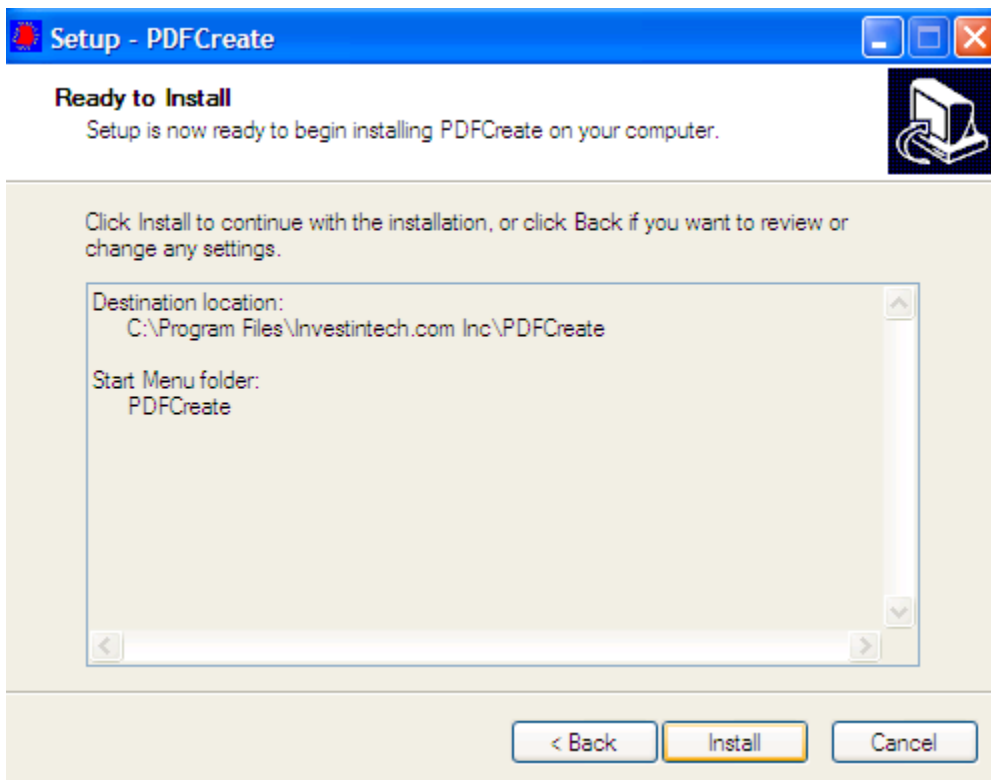
PDFCreate Command Line

possible to change the location of installation folder either by typing its path directly or by clicking the 'Browse...' button. If the destination folder (directory) you have chosen does not exist, the installation program will create it. Click the 'Next' button to continue the installation.



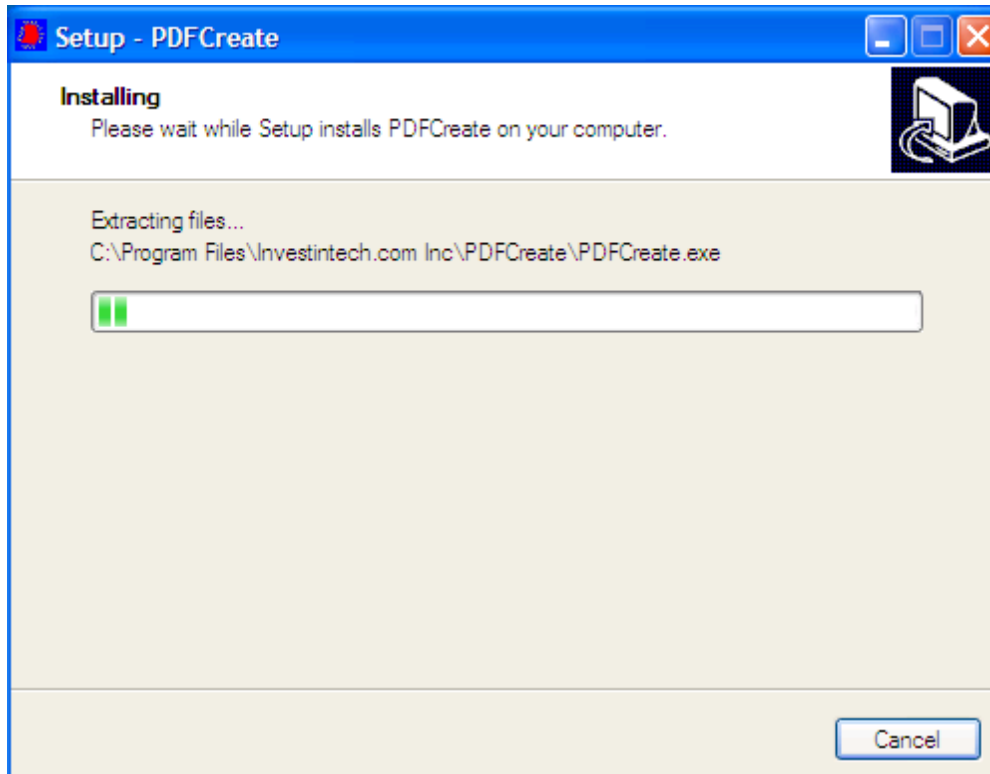
PDFCreate Command Line

This screen prompts you for the for the start menu folder containing shortcuts to PDFCreate You may accept the default folder name, type a new folder name, or browse existing folders by clicking the “Browse...” button. Click the ‘**Next**’ button to continue the installation.

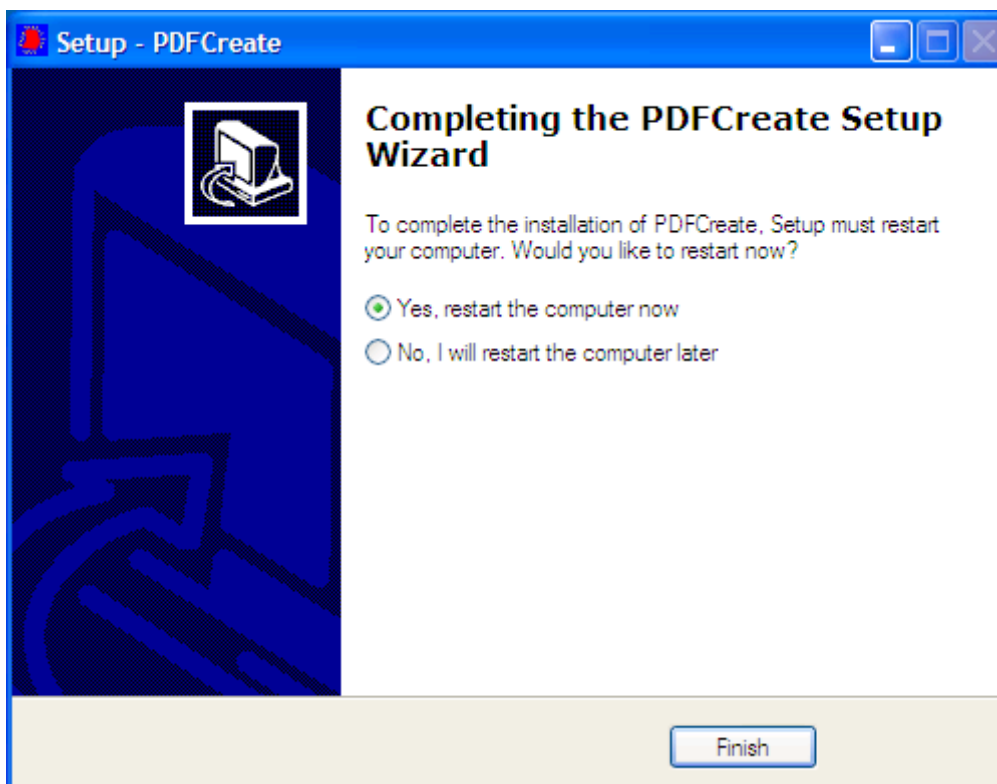


PDFCreate Command Line

Clicking the **'Install'** button will start the installation.



Setup will install the PDFCreate Command Line product on your computer. After a very short period of time, you should see the next window:



PDFCreate Command Line

The installation is now finished. Click **'Finish'** to finish the installation.

Using PDFCreate

This section provides detailed information about using the PDFCreate command line tool. The following topics are covered:

- using PDFCreate from the command prompt
- using PDFCreate for batch conversion

Using PDFCreate from Command Prompt

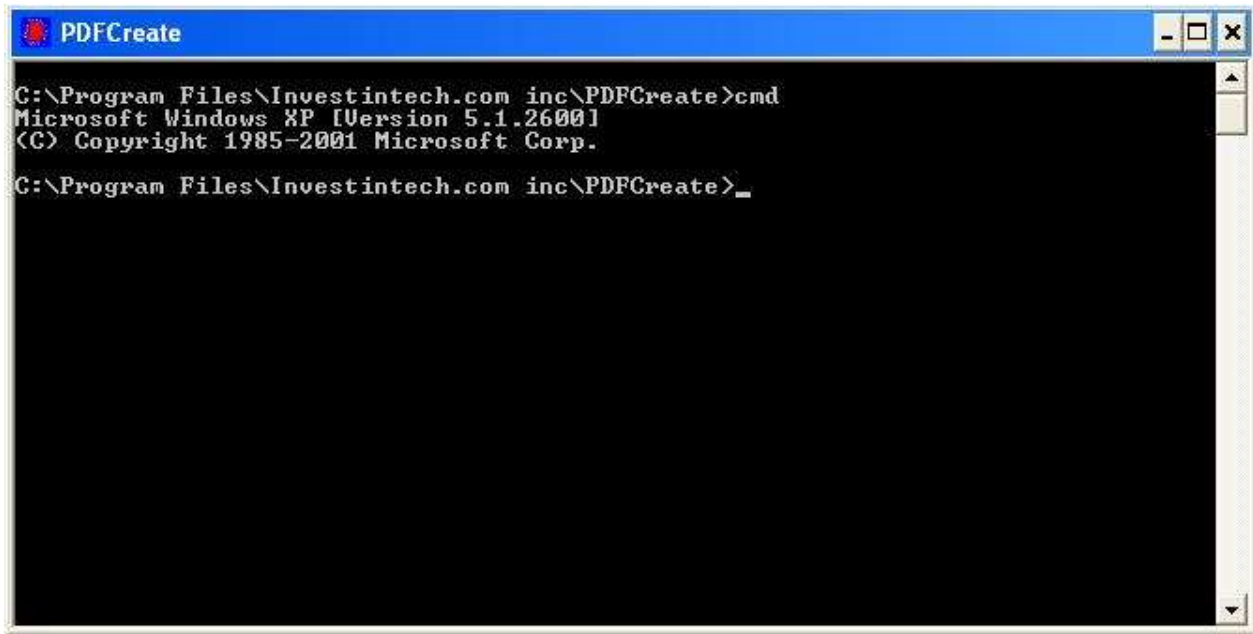
Prior to using PDFCreate, you must open a command prompt window. To open the command prompt window:

- Click the **'Start'** button, then point to **'All Programs'**, then point to **'PDFCreate'** and finally point and click on the **'PDFCreate'** menu item.



The window titled “PDFCreate” should open, as shown.

PDFCreate Command Line



```
C:\Program Files\Investintech.com inc\PDFCreate>cmd
Microsoft Windows XP [Version 5.1.2600]
(C) Copyright 1985-2001 Microsoft Corp.

C:\Program Files\Investintech.com inc\PDFCreate>_
```

To display the PDFCreate help message, simply type PDFCreate and press **Enter**.

PDFCreate Command Line

```
PDFCreate
C:\Program Files\Investintech.com inc\PDFCreate>pdfcreate
Investintech.com Inc. PDFCreate - Command Line Interface
Copyright 2009 Investintech.com Inc. All rights reserved

Unlimited edition

Usage :
PDFCreate [-s<schedule>]
-i<input> -o<output> -t<ticket>

where:
<schedule> is time at which conversion will occur (yyyy-mm-ddThh:mm:ss)

<input> specifies input pdf document (may include wildcards)
<output> specifies target output file path and extension
<ticket> specifies ticket file path and extension

Note: input and output files must contain full type extension
Wild cards:
? Matches any single character in document name
* Matches 0 or more characters in document name

Example:
PDFCreate -Ic:\documents\source.xls
           -Od:\pdfs\destination.pdf -Ttopdf.tikd
PDFCreate -Ic:\documents\graphics.doc
           -Od:\images\graphics.pdf -Ttopdf.tikd
PDFCreate -Ic:\documents\info.txt
           -Od:\images\graphics.pdf -Ttopdf.tikd
PDFCreate -s2009-01-02T06:30:00 -Ic:\Source.rtf -Od:\Target.pdf -Ttopdf
.tikd

-h or -help This help

C:\Program Files\Investintech.com inc\PDFCreate>
```

PDFCreate Command Line

The help message describes command usage, some examples and possible conversion types. The command line format is of the form:

```
PDFCreate [-s<schedule>] -i<input_file(s)> -o<output_file(s)> -t<ticket file>
```

Conversion Types

PDFCreate implicitly converts from a printable file format (e.g. Microsoft Word) to PDF format. It is not necessary or possible to explicitly specify a conversion type.

Schedule

This optional argument allows you to automate a one-off or recurring conversion operation at some time in the future.

A valid PDFCreate schedule parameter excludes whitespace and is of the form:

```
yyyy-mm-ddThh:mm:ss
```

Where:

yyyy

mmm

dd

hh is the hour in the range 00 - 23

mm is the minute in the range 00-59

ss

Input file(s)

This argument determines the source file, i.e. the file you want to convert data from. Please note the following:

- You must include both file name and extension separated with the dot character ('.'). For example, file `business.bmp` consists of file name 'business' and extension 'bmp'.

PDFCreate Command Line

- You must provide full path to the input file unless it is in the same folder as PDFCreate.exe. For example, if input file `business.bmp` is in `MyFiles` folder on C drive, you should type `c:\MyFiles\business.bmp` as an input file argument. If any folder name or file name in the path is longer than 8 characters or contains spaces you must surround its path with double quotation marks, e.g. `"c:\very long path\business.bmp"`

Output file(s)

This argument is a string expression determining the destination file, i.e. the file containing the results of the conversion. The naming rules used by PDFCreate are as follows. PDFCreate will use the specified directory or the current working directory if none is specified. It will use the name corresponding to the name of the source file. It will use the extension. Finally, the same path and file name rules apply for output file as well as for input file.

Ticket file

This argument is a string expression specifying the ticket file that will be used in the PDF creation operation. A ticket file contains sets of parameters that control various aspects of PDF file creation. PDFCreate provides "ToPDF.tikd", a default ticket file residing in the PDFCreate\TicketEditor folder with general setting suitable for most purposes. For more information, please see Appendix A of this guide.

Examples of Using PDFCreate

Here are some cases illustrating the use of PDFCreate. These examples are contained in the `samples\example.cmd` file installed in the PDFCreate installation directory.

Example #1

In this example we will assume that both input and output files will be located in the same folder. If you type

```
PDFCreate -iLorem_Txt.txt -olorem.pdf -tc:\ticket_files\topdf.tikd
```

and press '**Enter**', you will create a PDF file from the text file. The resulting PDF file can be opened by Adobe Reader. The screen below shows a successful conversion.

PDFCreate Command Line



```
C:\work_files>PDFCreate -iLorem_Txt.txt -o lorem.pdf -tc:\ticket_files\topdf.tikd
Investintech.com Inc. PDFCreate - Command Line Interface
Copyright 2009 Investintech.com Inc. All rights reserved

Unlimited edition

Input File(s) = -iLorem_Txt.txt
Output File(s) = -o lorem.pdf
Ticket File(s) = -tc:\ticket_files\topdf.tikd

Converting Lorem_Txt.txt to lorem.pdf
Lorem_Txt.txt > lorem.pdf
PDF Creation succeeded

C:\work_files>
```

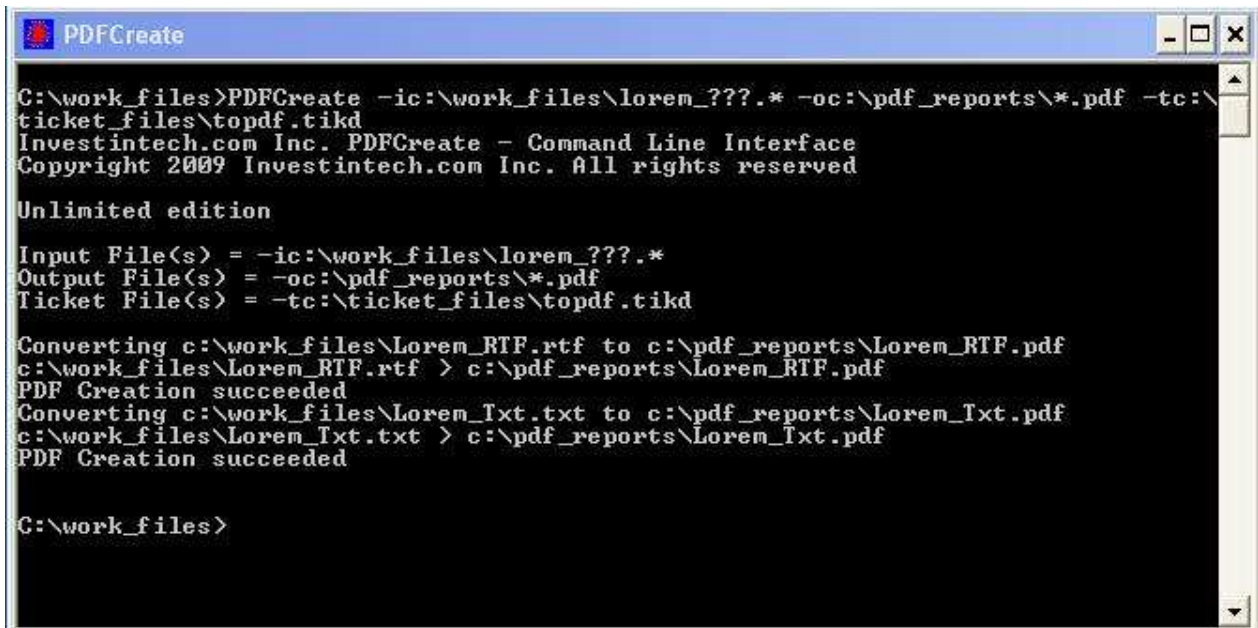
Example #2

In this example we will assume that directory `work_files` on the G drive contains a series of PDF documents. Further, we assume input file is in the same folder as `ImagetoPDF`, but we want output file to be created in the different folder, e.g. `c:\work_files`. If you type:

```
PDFCreate -ic:\work_files\lorem_???.* -oc:\pdf_reports\*.pdf -tc:\ticket_files\topdf.tikd
PDFCreate -ic:\work_files\lorem????.* -oc:\pdf_reports\*.pdf -
ttopdf.tikd
```

and press **Enter**, you will convert the matching documents from Microsoft Word to PDF. The screen below shows a successful conversion.

PDFCreate Command Line



```
C:\work_files>PDFCreate -ic:\work_files\lorem_???.* -oc:\pdf_reports\*.pdf -tc:\ticket_files\topdf.tikd
Investintech.com Inc. PDFCreate - Command Line Interface
Copyright 2009 Investintech.com Inc. All rights reserved

Unlimited edition

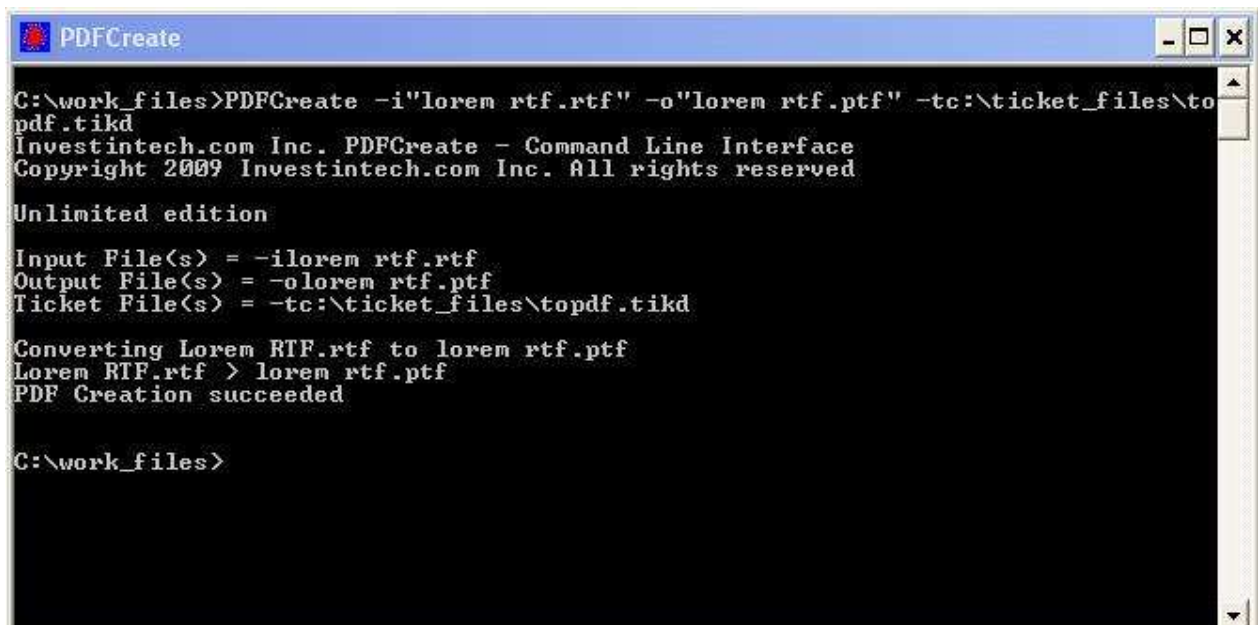
Input File(s) = -ic:\work_files\lorem_???.*
Output File(s) = -oc:\pdf_reports\*.pdf
Ticket File(s) = -tc:\ticket_files\topdf.tikd

Converting c:\work_files\Lorem_RTF.rtf to c:\pdf_reports\Lorem_RTF.pdf
c:\work_files\Lorem_RTF.rtf > c:\pdf_reports\Lorem_RTF.pdf
PDF Creation succeeded
Converting c:\work_files\Lorem_Txt.txt to c:\pdf_reports\Lorem_Txt.pdf
c:\work_files\Lorem_Txt.txt > c:\pdf_reports\Lorem_Txt.pdf
PDF Creation succeeded

C:\work_files>
```

Example #3

In this example we wish to create a PDF from a file with a space in the file name. Type `PDFCreate -i"lorem rtf.rtf" -o"lorem rtf.pdf" -tc:\ticket_files\topdf.tikd` ensuring the file name is enclosed in double quotes and press **Enter**.



```
C:\work_files>PDFCreate -i"lorem rtf.rtf" -o"lorem rtf.pdf" -tc:\ticket_files\topdf.tikd
Investintech.com Inc. PDFCreate - Command Line Interface
Copyright 2009 Investintech.com Inc. All rights reserved

Unlimited edition

Input File(s) = -i"lorem rtf.rtf"
Output File(s) = -o"lorem rtf.pdf"
Ticket File(s) = -tc:\ticket_files\topdf.tikd

Converting Lorem RTF.rtf to lorem rtf.pdf
Lorem RTF.rtf > lorem rtf.pdf
PDF Creation succeeded

C:\work_files>
```

PDFCreate Command Line

Example #4

In this example we will schedule a reoccurring PDF creation operation. If you type:

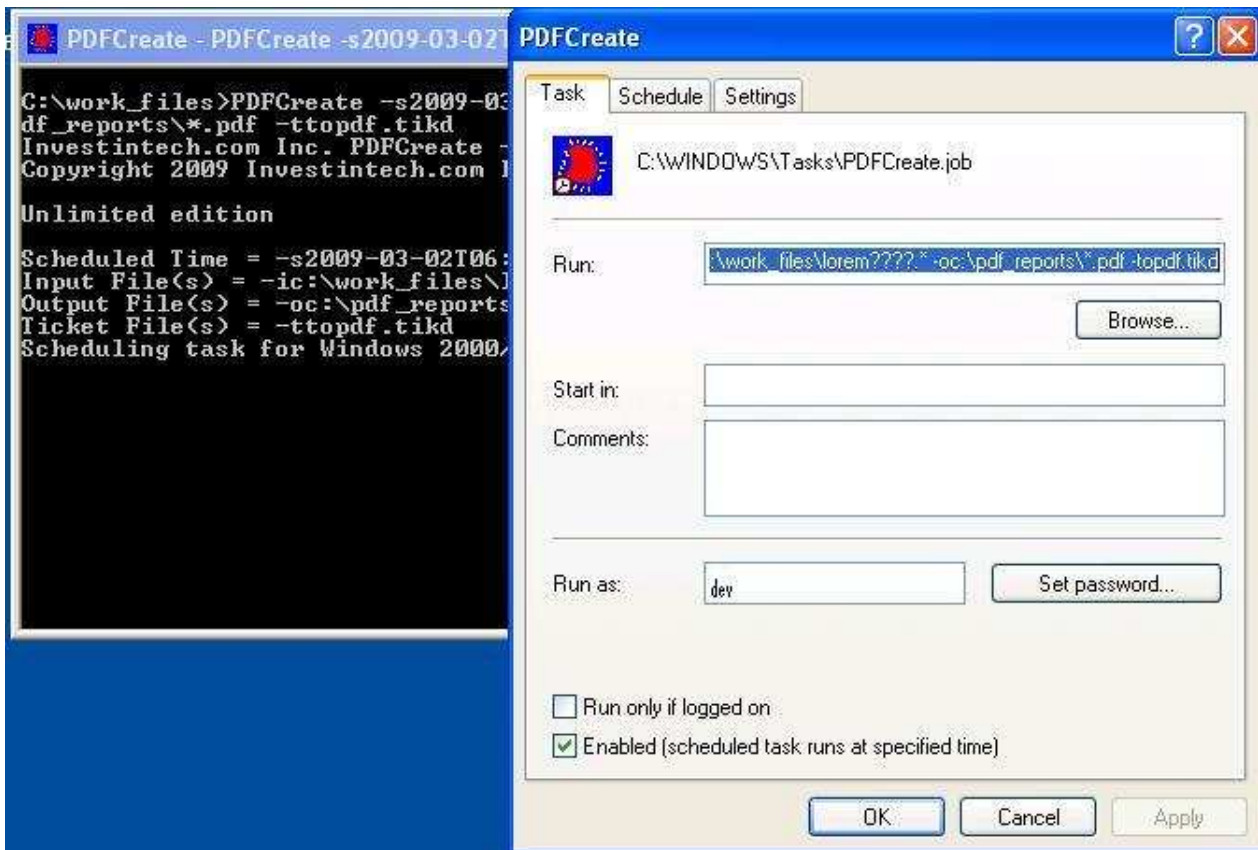
```
PDFCreate -s20090302T06:30:00 -ic:\work_files\lorem????.* -oc:\pdf_reports\*.pdf -ttopdf.tikd
```

and press **Enter**, you will be prompted for the account credentials that will be used to execute the PDF Creation operation at the scheduled time. Please enter a valid account name a password.

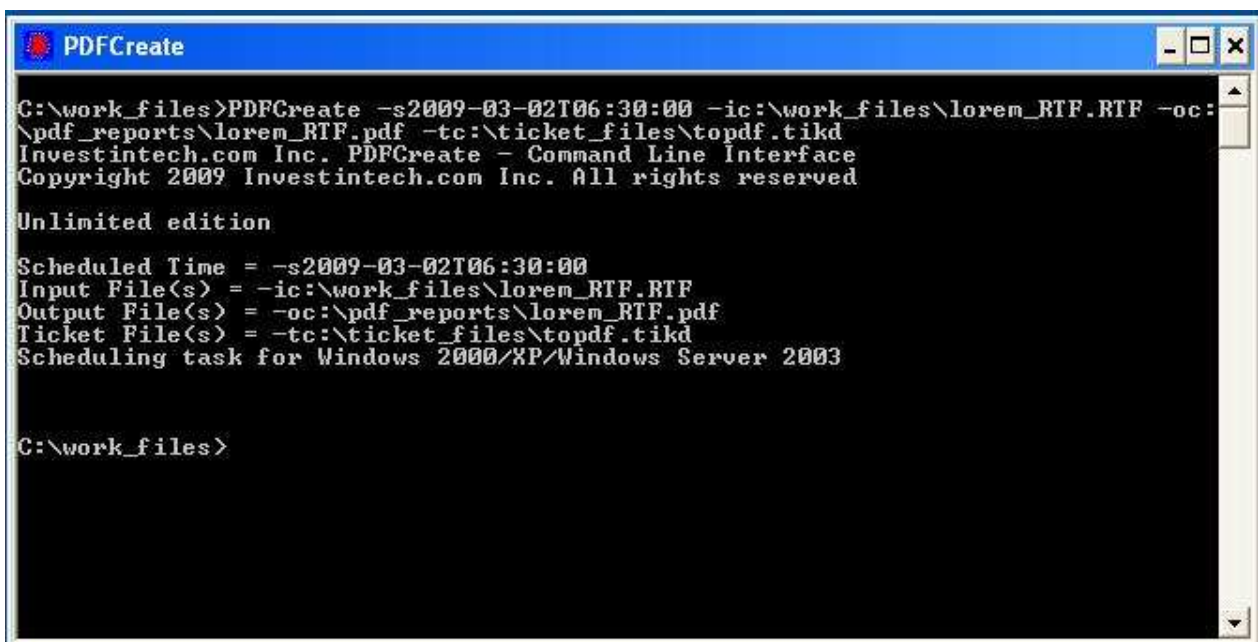


Pres OK to view the scheduled parameters:

PDFCreate Command Line



Press OK again to save the scheduled parameters for later execution.



Troubleshooting

There are a few cases in which PDFCreate is unable to perform the requested file conversion. Please consult the following table if you experience any of errors while working with PDFCreate.

<i>Error</i>	<i>Cause</i>	<i>Solution</i>
Unable to find source document <file name>.	Misspelled or omitted input document file parameter. It is also possible you do not have permissions to access input file	use -i<filename.ext> expression to specify source file of the PDF creation or contact your system administrator to give you permissions to read input file.
Task not scheduled when using schedule parameter	Schedule time specified incorrectly.	Use the specifoed time format: YYYY-MM-DDThh:mm:ss e.g. -s2009-01-02T06:30:00
Unable to create PDF!	Input file was found but it either is not a supported image file or it is damaged or corrupted	If source application can open the file without any error message please send the file to our technical support e-mail and we will look further into the problem.

Appendix A - Tickets

This section provides a description of the ticket file and the Ticket editor, a GUI tool that may be used to edit ticket files.

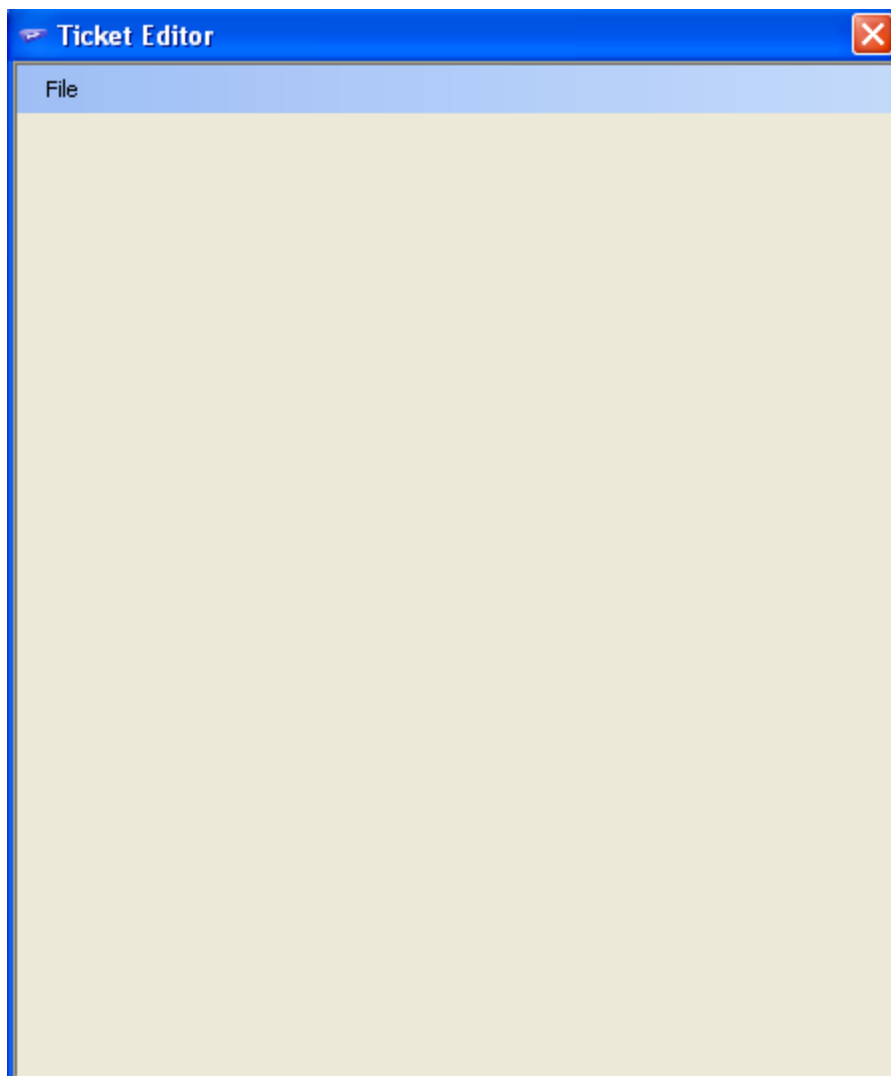
Ticket File

A ticket file contains several sets of related parameters used to create a PDF file. Each PDF creation method contained in the DLL or COM component of the SDK requires you to specify a ticket file in addition to the source file and the PDF file to be created. The SDK provides a default ticket file named ToPDF.tikd that resides in the TicketEditor folder of the SDK base installation folder. You may use the default ticket file without change or you may modify its parameters to fine tune your conversions. You may use the TicketEditor tool to edit a ticket file. The following section describes how you may use the TicketEditor to create the needed ticket file.

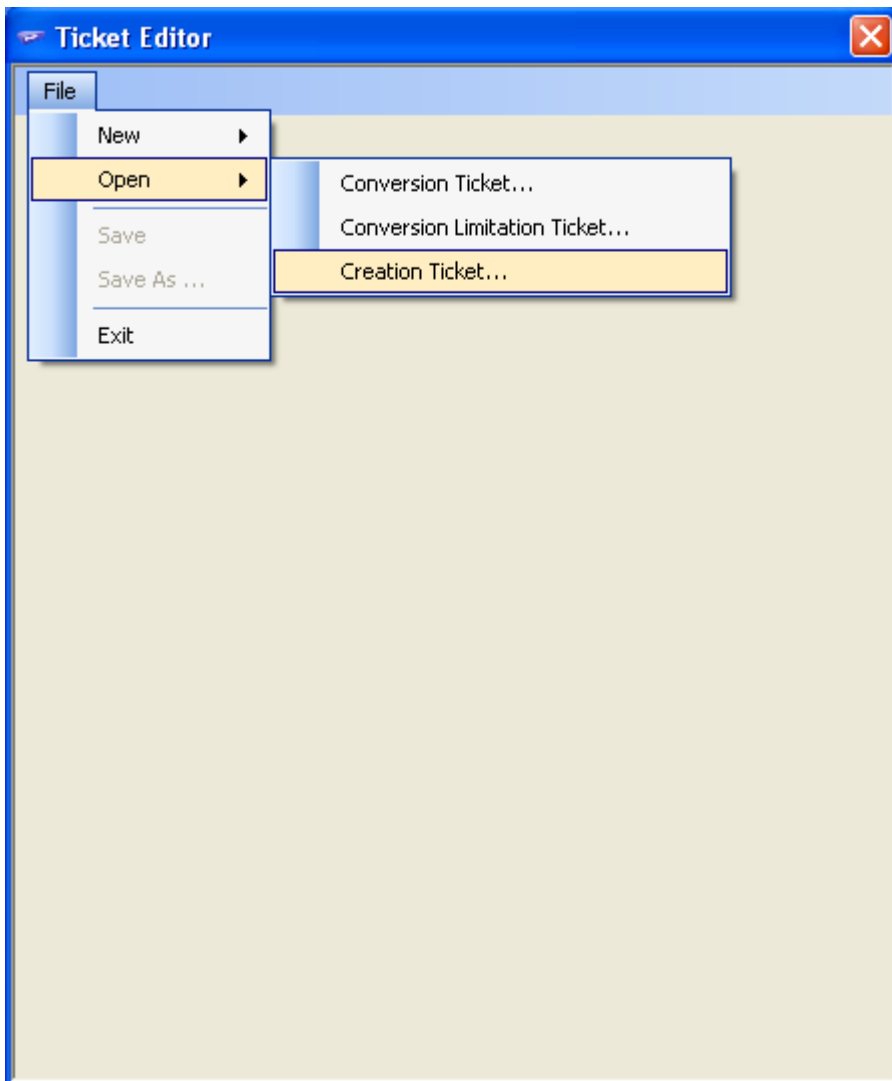
Ticket Editor

You may launch the Ticket Editor tool by navigating the path:
Start | All Programs | PDFCreateSDK | Ticket Editor

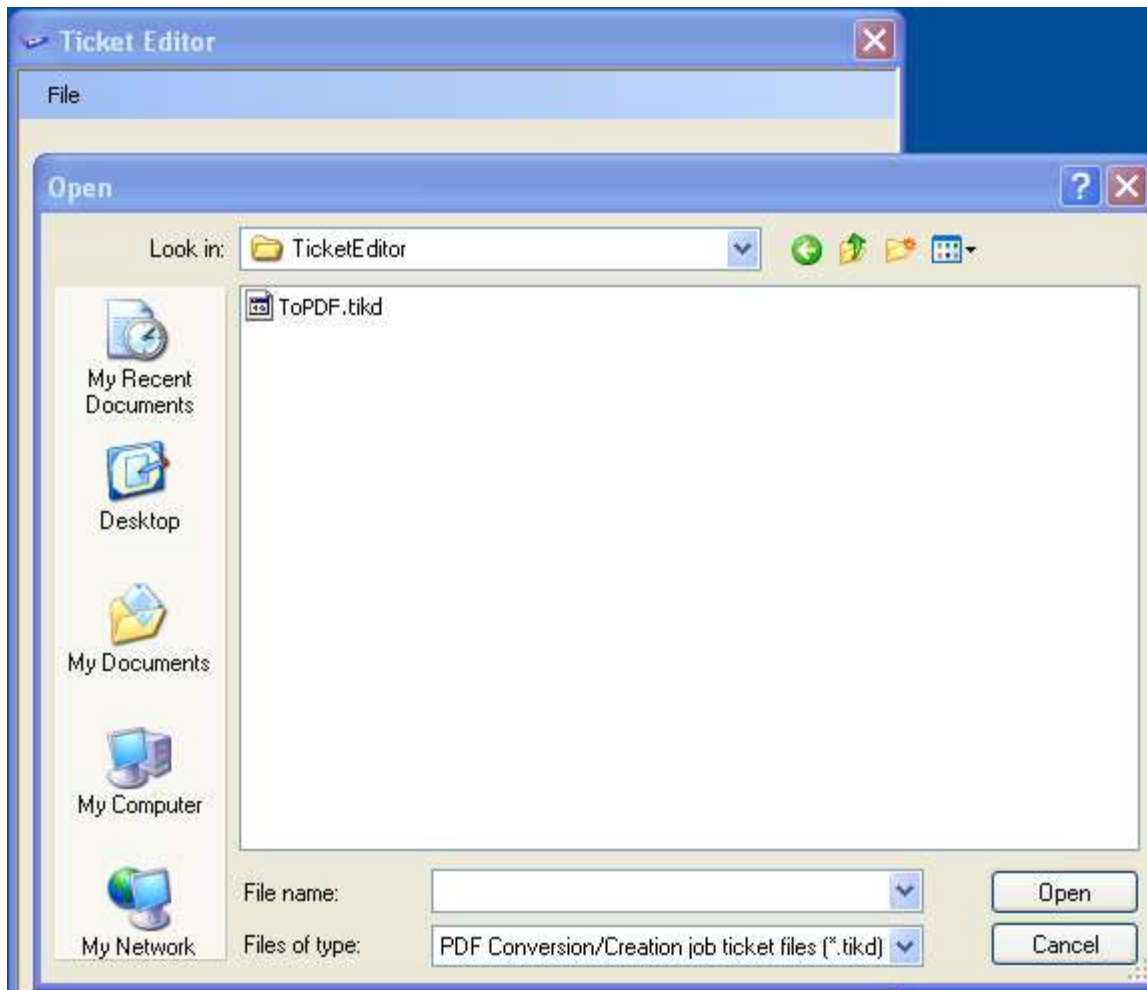
When the main windows appears:



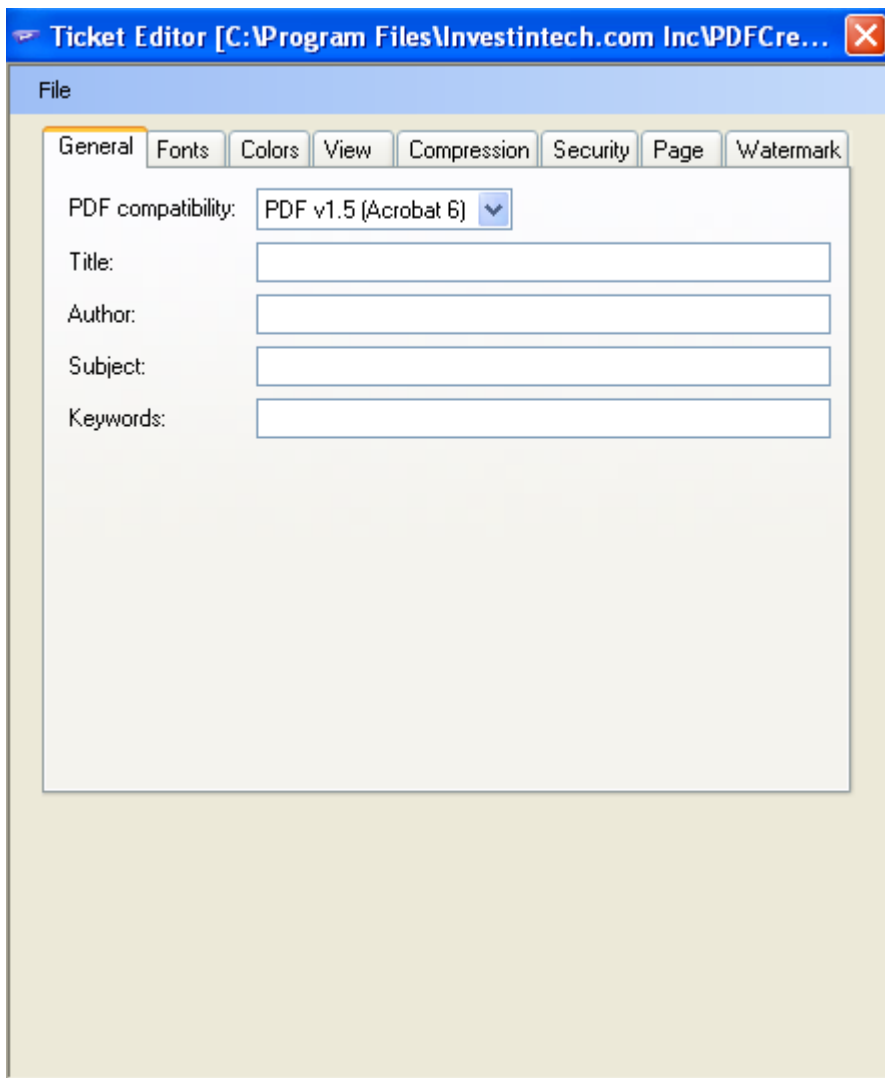
You may open a ticket file by navigating the tool's menu to:
File | Open | Creation Ticket...



Select the default ticket file, ToPDF.tikd that resides in the TicketEditor folder.



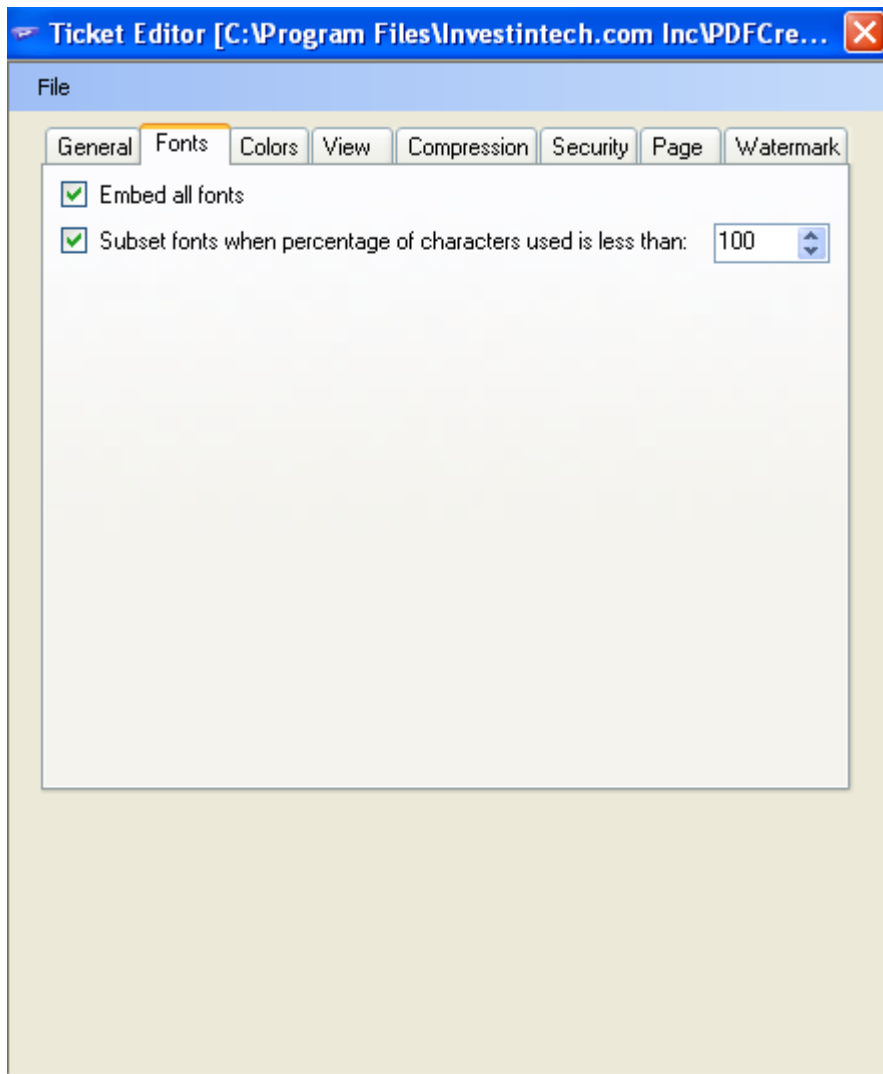
The first set of parameters is displayed on the General tab. It includes the target PDF version as well as PDF document meta data.



PDF compatibility – sets the compatibility of a created document to various versions of PDF standard. The older the standard is set, more compatible document will be.

Fields **Author, Subject, Keywords** – these fields are optional, here user can set a name of the author of the PDF document, its subject or keywords (might be useful if a document is intended for web publication, for example).

The second set of parameters is contained in the Fonts tab.

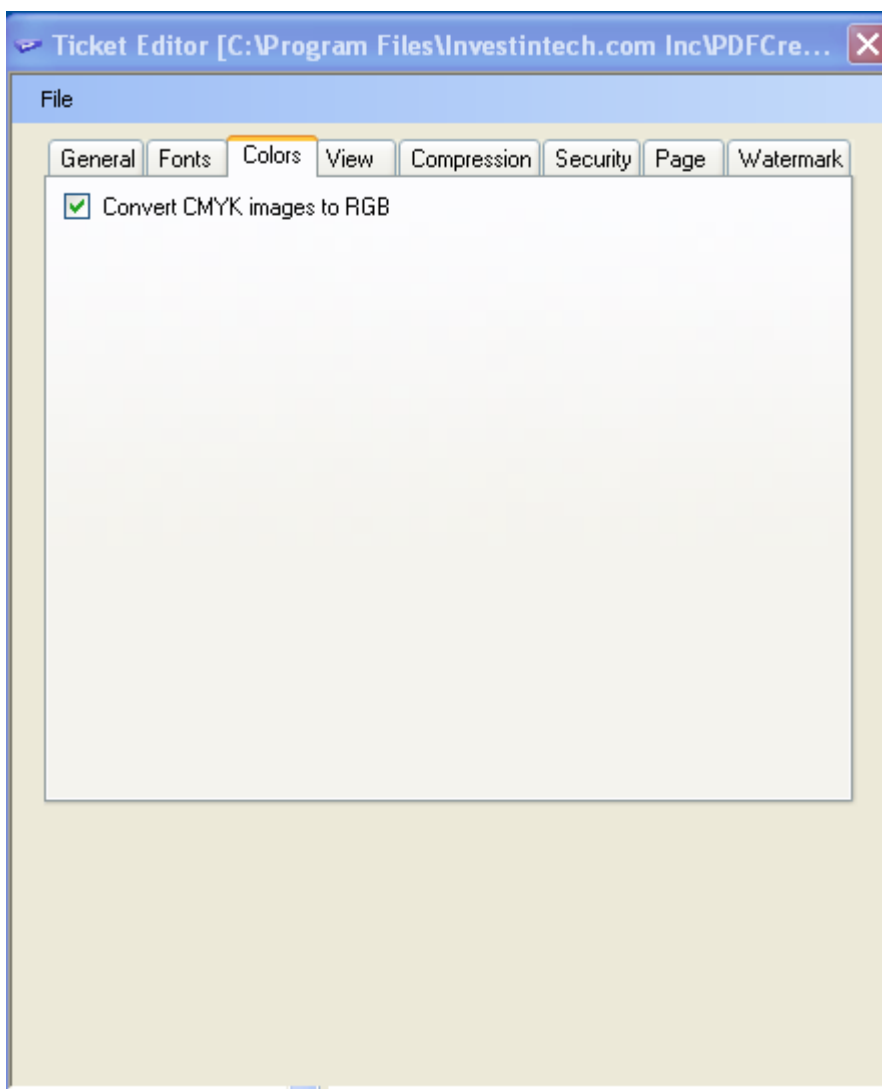


Embed all fonts – this options forces embedding of all fonts used in created document, as opposed to referencing definitions of commonly used fonts. Selecting this option increases portability of a document, but also its size.

Subset fonts when percentage of character used is less than – this option is actually a sub option of “Embed all fonts” option. Characters defined in a font, but not used in this actual document should not be defined in an embedded font.

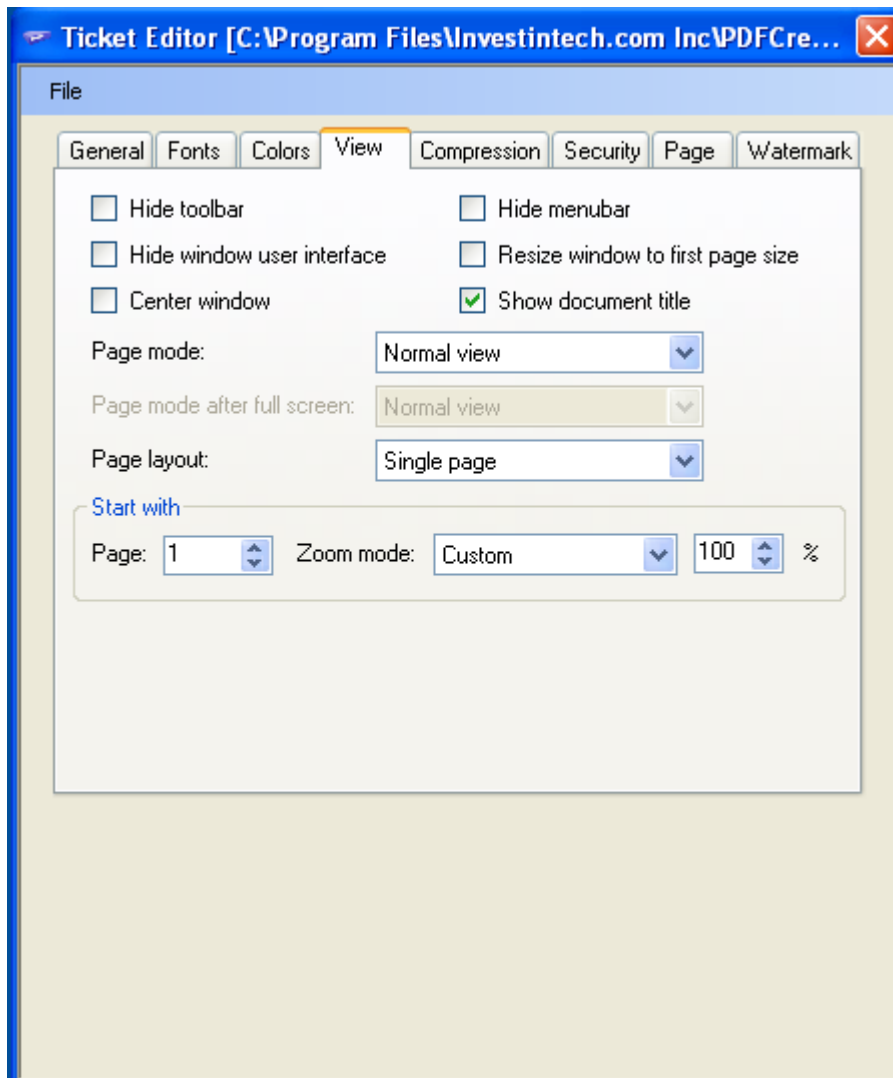
The third set of parameters is contained in the Colors tab.

ImagetoPDF Command Line



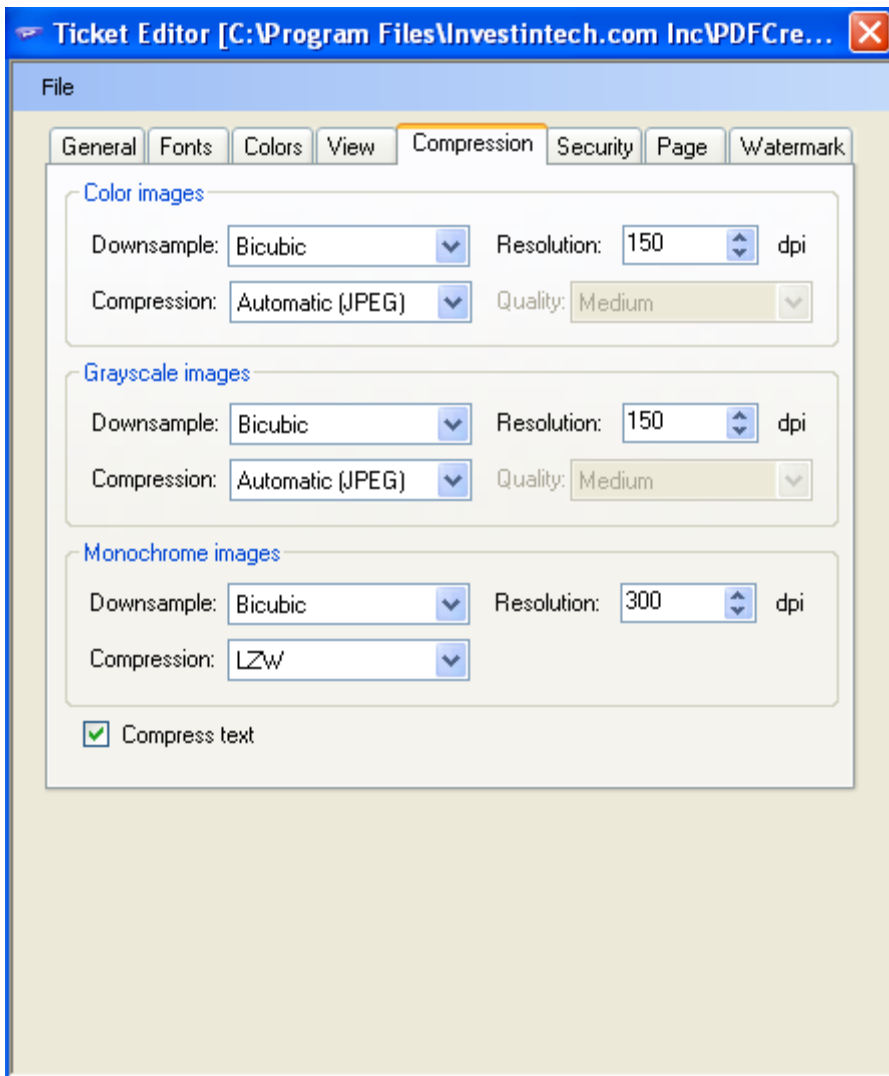
Convert CMYK images to RGB – this option is used to convert color palettes used in document's images from CMYK palette to RGB palette.

The next set of parameters is contained in the View tab.



“View” tab of new PDF Creation JT dialog is used to set parameters for opening a created document, that are to be embedded in a created document. All of these parameters are only default viewing parameters (e.g. applied when generated PDF file is double-clicked), changeable in PDF viewer once a file has been opened.

The next set of parameters is contained in the Compression tab.



Color images compression

Subsample – 3 sampling methods, and also sub sampling off

Resolution – 10-2400 dpi,

Compression – various bitmap compression algorithms (image formats)

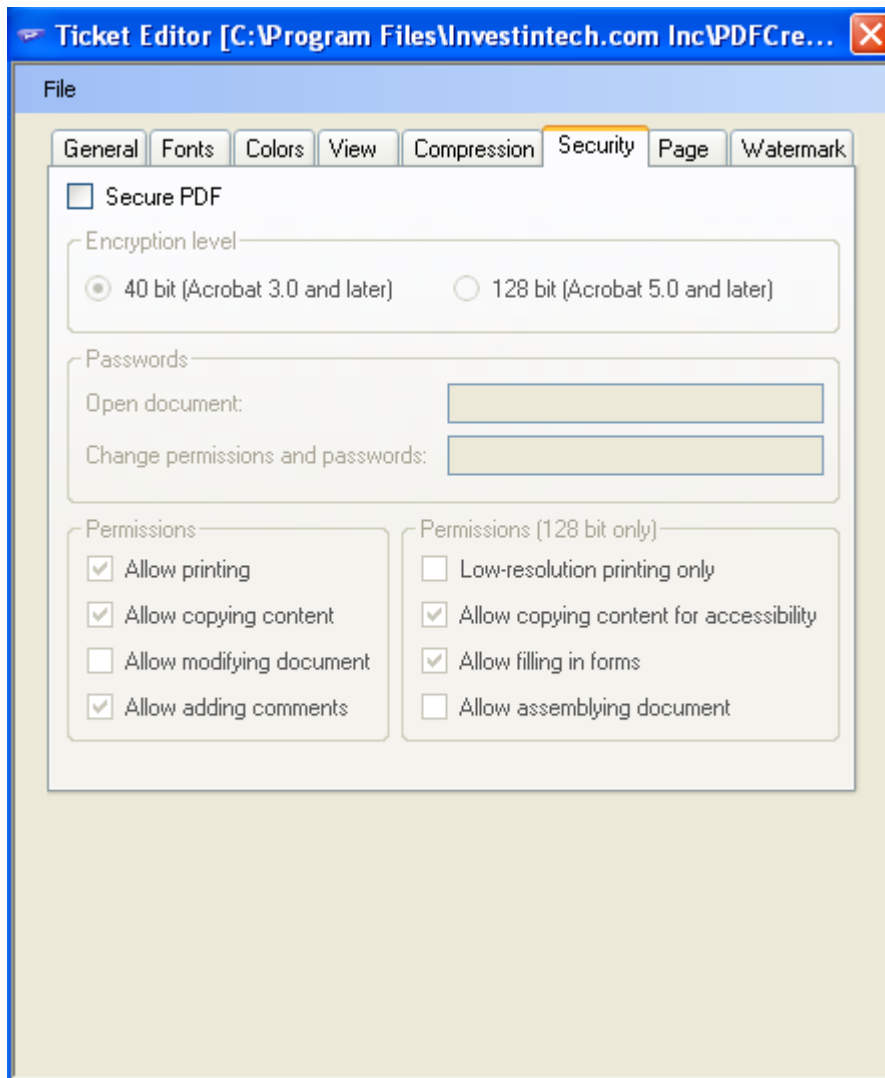
Quality – applicable only when compression is set to JPEG

Grayscale images compression - similar to color images compression

Monochrome images compression - similar to color images compression, but compression options are different and there's no quality option.

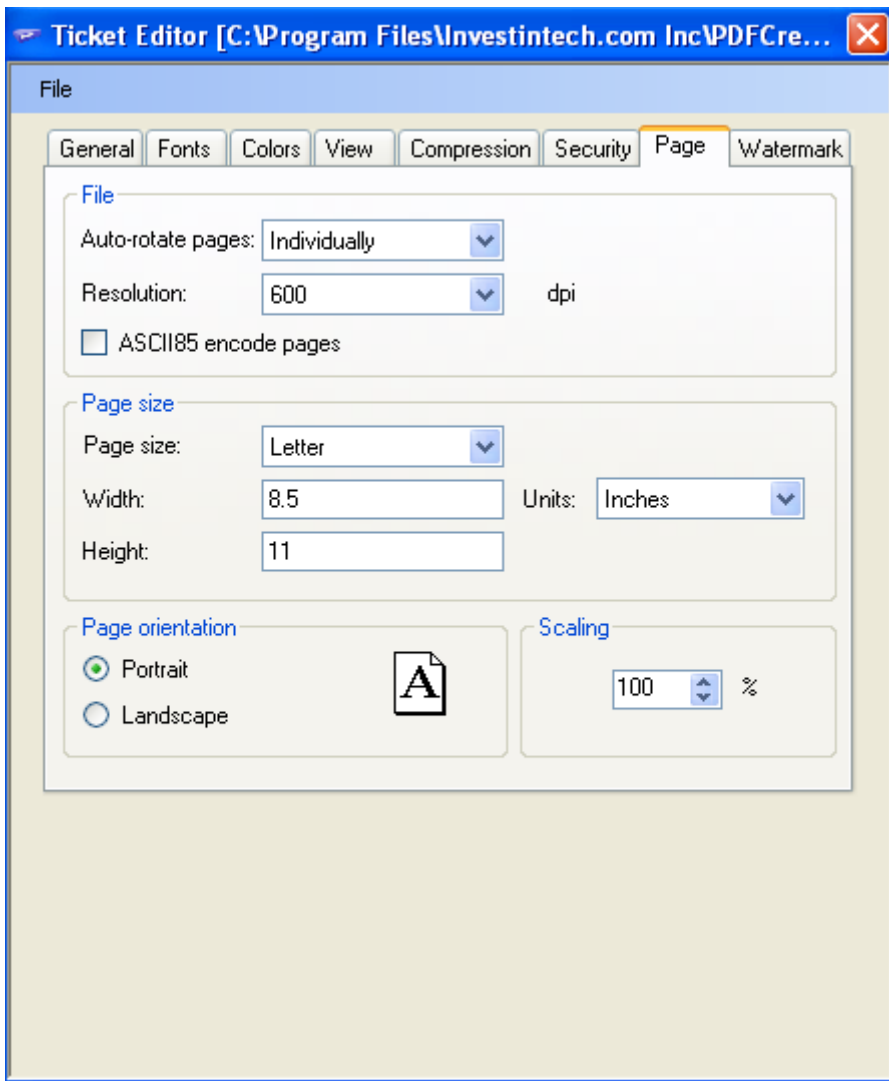
Text compression – sets text compression on or off

The next set of parameters is contained in the Security tab.



“Security” tab contains options for creating a secure PDF, with sub options for Encryption level, Passwords and Permissions.

The next set of parameters is contained in the Page level tab.



Page Rotation options: off (manually), individually (Page by page) and collectively by File (Whole file)

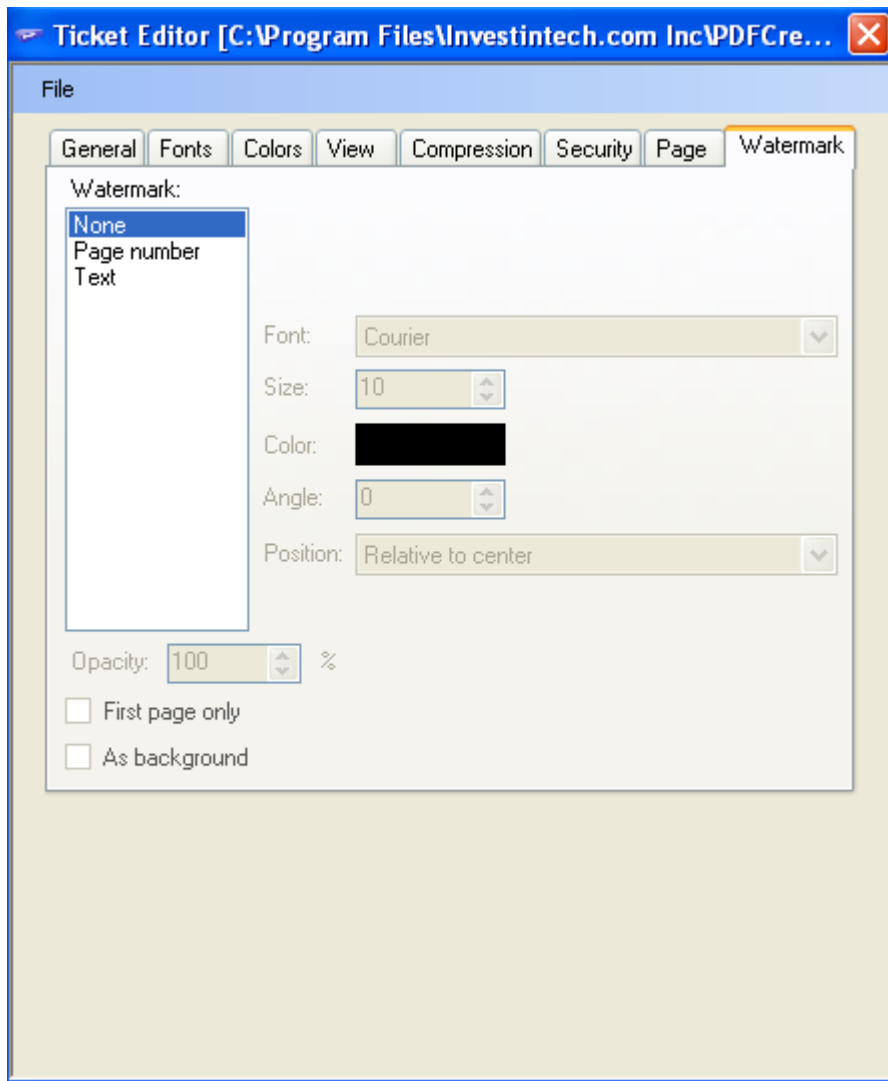
Output PDF resolution setting: 8 options ASCII 85 encoding selection – ASCII 85 is an encoding standard. Used in Postscript, ASCII85 is more space efficient than MIME base 64.

Page size selection: standard or custom, both can be showed and operated in 3 kinds of unit: Inches, MMs or Points

Page content scaling: from 1%-100%

Page orientation: use can select only when Auto-Rotate pages sets to off

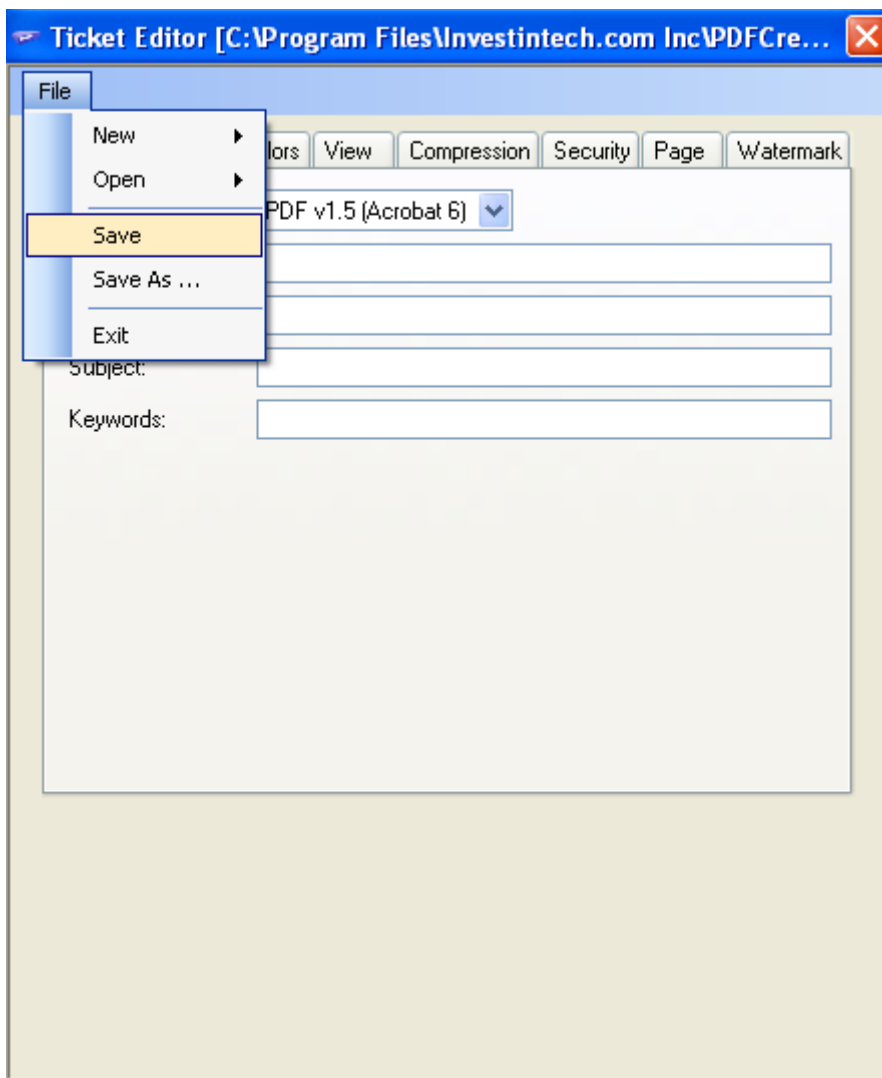
The next set of parameters is contained in the Watermark tab.



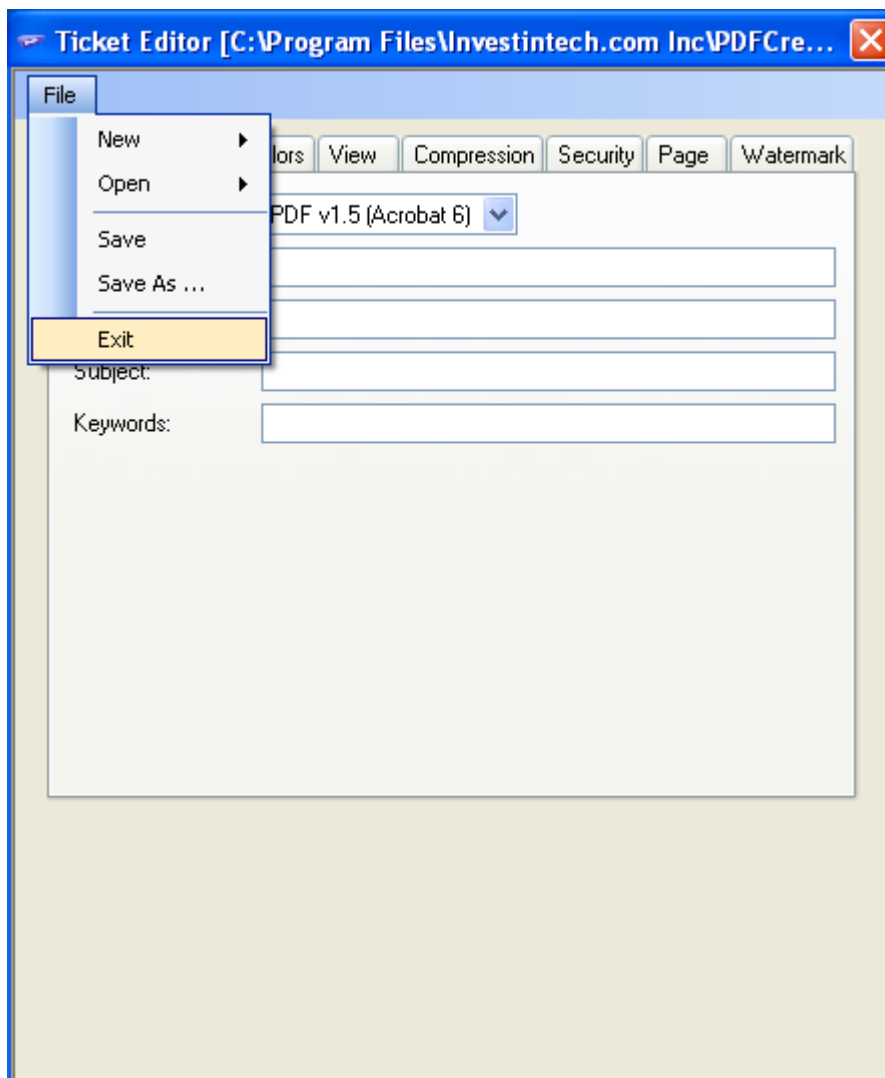
- watermark type: page number and text.
- Supports text type watermarks - page #, header, footer, ...
- Watermark font settings
- Opacity setting
- Select if only apply to first page
- Select if watermark is to be applied as background

To save your changes,

ImagetoPDF Command Line



To exit the Ticket Editor,



Index

Command Line	4
Customer Service.....	2
Examples of Using	17
Input file	16
Installation Instructions	4
Investintech.com Inc.....	1
Output file.....	17
PDFCreate Command Line	3
Schedule	16
System Requirements	4
Technical Support.....	2
Ticket Editor	23
Ticket file.....	17
Ticket File.....	23
Troubleshooting.....	22
Using.....	13